

.1997

:

-

.

.

-

: -1

02 /16 : -2

:

61257 : -1

7885554 (031) : -2

1997 : -3

121235150036:NSM -4

20582200 : NPSN -5

B : -6

7000 + : -7

3000 + : -8

:

: -

: -

: -

: -

-

"

"

:

-1

-2

-3

-4

-5

-6

-

-1

-2

-3

-4

	-
	-
Lina Khustiana S.Pd :	-1
Aminatus Zuhriyah S.Pd:	-2
Mamik Sufaidah S.Pd :	-3
Drs.Abdul hadi :	-4
Hj. Yuni Hikmah :	-5
Eni Kusrini :	-6
Arif Rahman .a	
Suswati :	-7

1 :

		D-1	D-3	S-1	S-2	
1				√		
2				√		
3				√		
4				√		
5				√		
6				√		
7				√		
8				√		
9				√		
10				√		
11				√		

12				√		
13				√		
14				√		
15				√		
16				√		
17				√		

2 :

1			
2			
3			
4			
5			
6			

7			
8			
9			
10			
11			
12			
13			
14			
15			
16			
17			

3 :

		-2009 2010	-2010 2011	-2011 2012	-2012 2013	
1	7	67	63	61	71	
2	8	51	62	62	63	
3	9	43	55	64	58	
		133	180	187	192	

4:

		-2009 2010	-2010 2011	-2011 2012	-2012 2013	
1	7	2	2	2	2	
2	8	2	2	2	2	
3	9	2	2	2	2	

5:

1	
2	
3	
4	
5	

6	
---	--

-

.

.

.

.

-

-1

-2

-3

-4

-5

-6

-7

-8

-9



.

.

.

.

.

.

.

.

.

.

.

.

⋮

() 3 :

() 2 :

() 1 :

6:

	1	2	3	4	5	6	7	8	9	10	11	12	13	14	15	
1	3	3	3	3	3	3	3	3	3	2	3	3	3	3	3	43
2	3	3	3	3	3	3	3	3	1	3	3	1	3	2	3	41
3	3	3	3	3	2	3	2	3	3	3	2	3	3	3	3	39
4	3	3	3	3	3	3	2	1	1	3	3	3	3	1	3	40
5	3	3	3	3	2	3	3	3	3	3	3	2	3	3	2	39
6	3	3	3	3	3	3	3	2	3	2	3	3	3	3	3	41
7	3	3	3	3	3	2	3	3	3	3	3	2	3	3	3	41

8	3	3	3	1	2	3	2	1	3	2	1	2	3	3	3	34
9	3	3	3	3	3	3	2	1	3	2	1	3	3	1	3	38
10	3	3	3	3	3	3	3	3	3	3	1	3	3	3	3	44
11	3	3	3	3	2	3	1	2	3	2	1	2	3	3	3	35
12	3	3	3	3	3	2	2	3	3	2	3	3	3	2	3	37
13	3	3	3	3	3	3	3	3	3	2	3	2	2	1	3	40
14	3	3	3	3	3	3	2	3	2	3	3	3	3	3	3	41
15	3	3	3	2	2	2	2	2	2	2	3	3	2	2	3	36
16	3	3	3	3	3	3	3	3	3	3	3	2	2	3	3	41
17	3	2	3	3	3	3	2	2	3	2	1	2	3	2	3	32
18	3	3	3	3	3	3	2	2	3	2	1	2	3	3	3	36
19	3	3	3	3	3	3	3	3	3	2	2	2	3	3	3	39
20	3	3	3	3	3	3	3	3	3	3	3	2	2	3	3	41
21	3	3	3	3	3	3	3	3	2	3	3	3	3	3	3	43
22	3	3	3	2	3	3	2	2	2	3	3	3	3	3	3	36
23	3	3	3	3	3	3	3	2	3	2	3	3	3	2	3	39
24	3	3	3	3	1	3	2	2	3	2	3	3	3	2	2	34
25	3	3	3	3	3	3	2	3	3	2	2	2	3	2	3	35
26	3	3	3	3	3	3	3	3	2	3	3	3	3	3	3	43
27	3	3	3	3	3	3	2	3	3	2	2	1	3	3	3	38

49

28	3	3	3	3	2	3	3	3	3	2	3	2	3	3	3	39
28	3	3	3	3	3	3	2	3	3	3	3	3	3	3	3	43
30	3	3	3	3	1	3	3	3	1	3	1	3	3	3	3	42

:

7:

.

		N	F	%
1	...	30	30	%100
	...		-	
	...		-	
		30	30	%100

:

%100

%0

.

%0

8:

		N	F	%
2	ف	30	29	%97
	ب		1	%3
	ا		-	-
		30	30	%100

: %97
 %0 %3

9:

		N	F	%
3	ج	30	30	%100
	ب		-	
	ا		-	
		30	30	%100

:

%100

%0

%0

10:

		N	F	%
4	ب	30	27	%90
	ا		2	%7
	ج		1	%3

52

	30	30	%100
--	----	----	------

: %90

%7

%3

11:

		N	F	%
5	ع	30	22	%73
	ف		6	%20
	ب		2	%7
		30	30	%100

: %73

%20

%7

12:

		N	F	%
6	ع	30	28	%93
	ا		2	%7
	ب		-	-
		30	30	%100

: %93

%7

%0

13:

		N	F	%
7	ا	30	15	%50
	ب		14	%47
	ع		1	%3

54

	30	30	%100
--	----	----	------

:
%47

%50

%3

14:

		N	F	%
8	ذ.	30	20	%67
	أ.		7	%23
	ب.		3	%10
		30	30	%100

:
%23

%67

%10

15:

		N	F	%
9	ج	30	22	%73
	ب		5	%17
	ا		3	%10
		30	30	%100

:

%73

%17

%10

16:

		N	F	%
10	ب	30	14	%47
	ا		16	%53
	ج		-	-

56

	30	30	%100
--	----	----	------

: %47

%53

%0

17:

.

		N	F	%
11	it	30	19	%64
	u		4	%13
	it		7	%23
		30	30	%100

: %64

%13

%23

18:

		N	F	%
12	ت	30	16	%53
	س		12	%40
	ج		2	%7
		30	30	%100

: %53

%40

%7

19:

		N	F	%
13	ت	30	27	%90
	س		3	%10
	ج		-	-

58

	30	30	%100
--	----	----	------

: %90

%10

%0

20:

		N	F	%
14	ع	30	20	%67
	ف		7	%23
	ج		3	%10
		30	30	%100

59

: %67

%10

%23

21:

)

(

		N	F	%
15	ح	30	28	%93
	خ		2	%7
	د		-	-
		30	30	%100

: %93

%7 ()

%0

$$P = \frac{F}{N} \times 100\%$$

:

=P

=F

=N

:

$$= \% 100 - \% 76$$

$$= \% 75 - \% 56$$

$$= \% 55 - \% 40$$

$$= \% 39 - \% 10$$

()

:

.

$$P = \frac{F}{N} \times 100\%$$

$$P = \frac{100 + 97 + 100 + 90 + 73 + 93 + 50 + 67 + 73 + 47 + 64 + 53 + 90 + 67 + 93}{15} \times 100\%$$

$$P = \frac{1157}{15} \times 100\%$$

$$P = 77.13$$

%100 - %76 %13333 77

22:

1		70
2		80
3		80
4		80
5		80
6		80
7		85
8		75
9		70
10		80

11		85
12		80
13		80
14		80
15		70
16		80
17		80
18		75
19		80
20		80
21		80
22		70
23		75
24		80
25		85
26		85

64

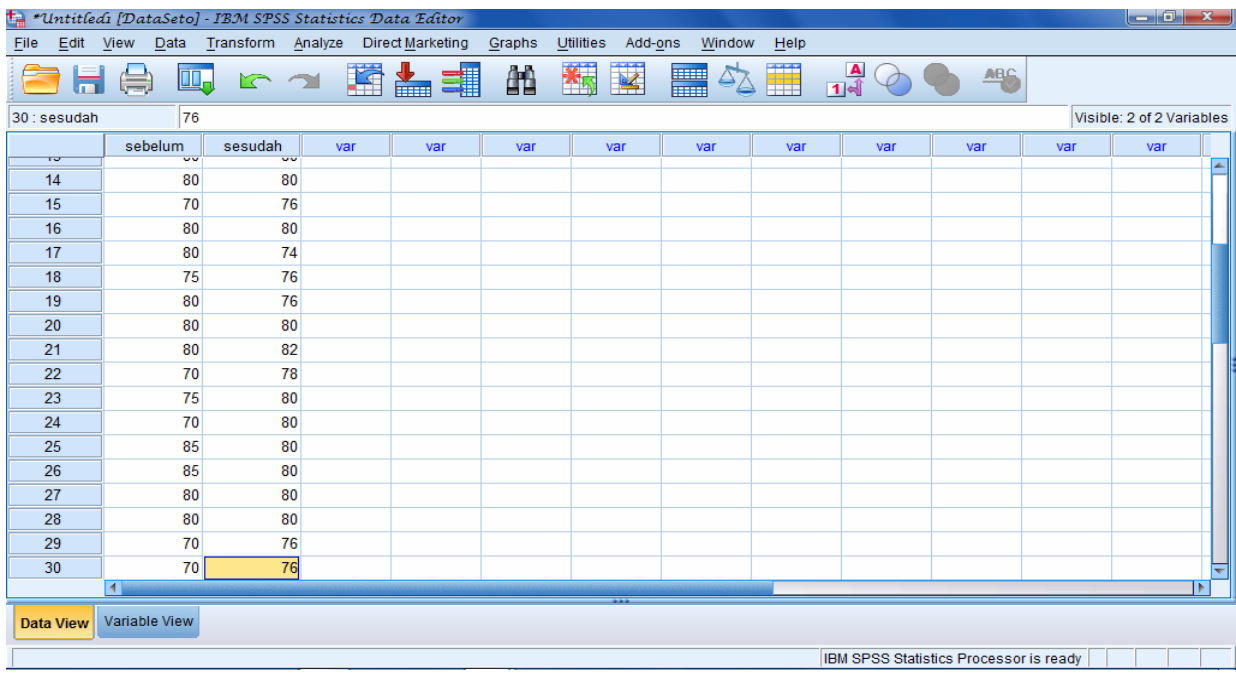
27		80
28		80
29		70
30		70

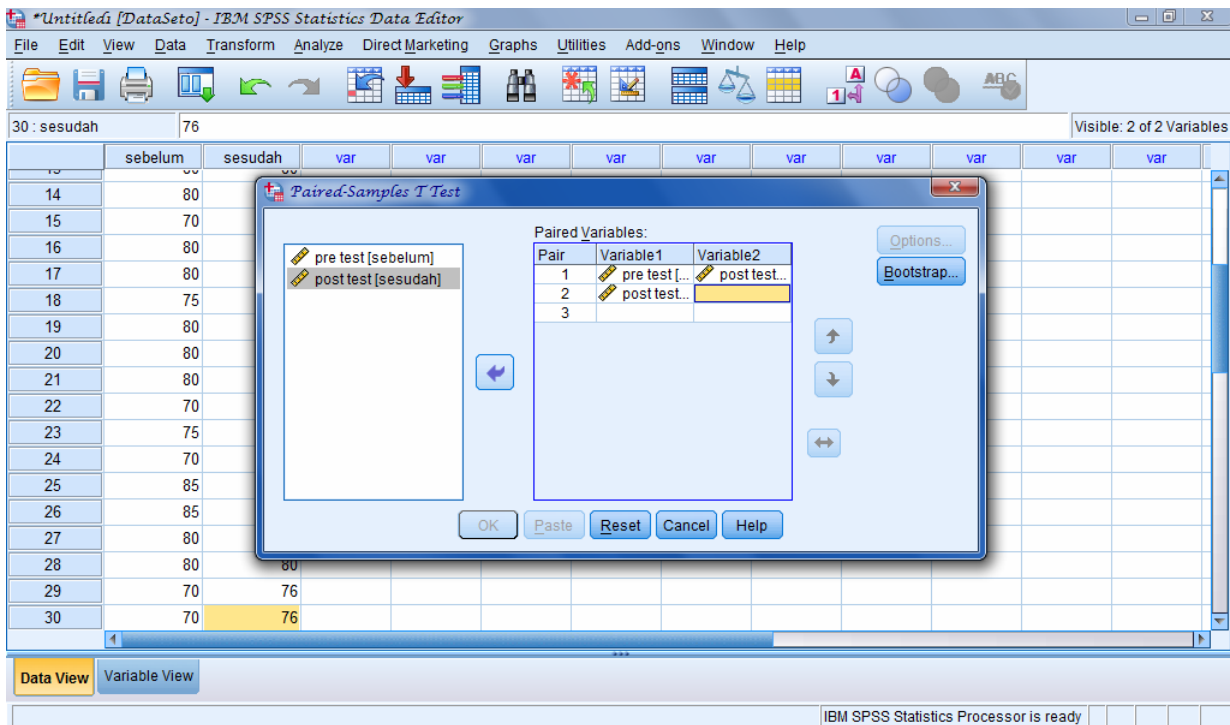
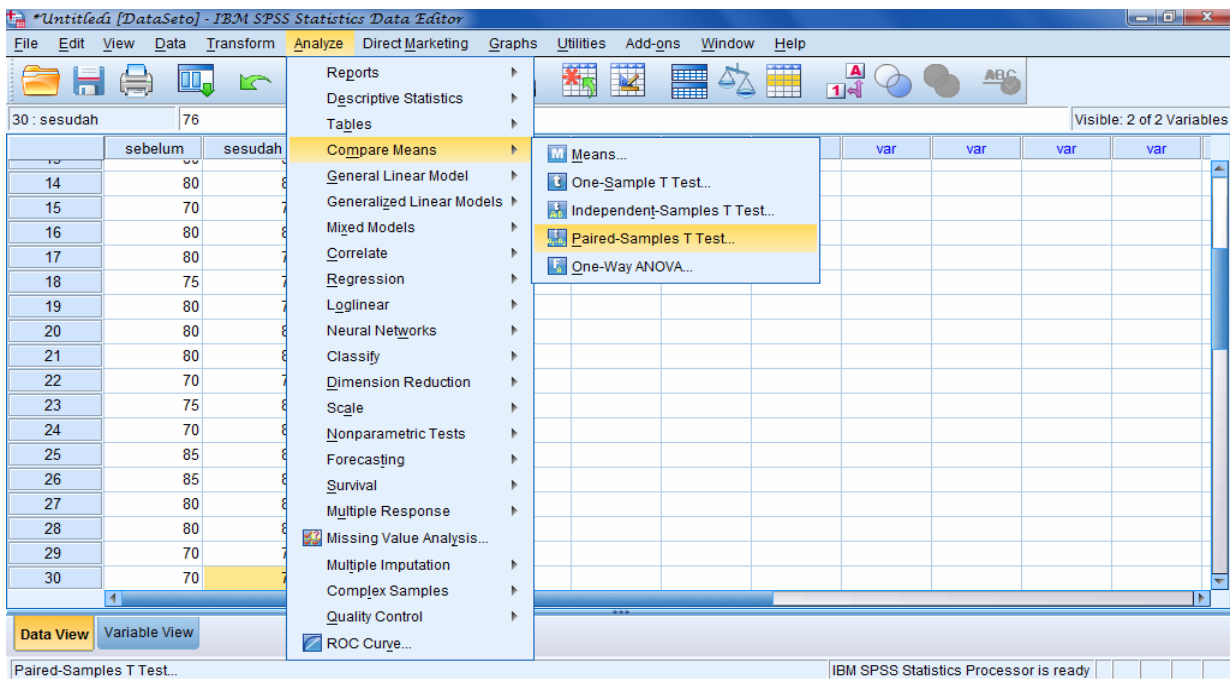
23 :

80	400	80	80	80	80	80		1
80	400	80	80	80	80	80		2
80	400	80	80	80	80	80		3
80	400	80	80	80	80	80		4
80	400	80	80	80	80	80		5
80	400	80	80	80	80	80		6
76	380	80	70	70	80	80		7
76	380	80	70	70	80	80		8
74	370	70	70	70	80	80		9

80	400	80	80	80	80	80		26
80	400	80	80	80	80	80		27
80	400	80	80	80	80	80		28
76	380	80	70	70	80	80		29
76	380	80	70	70	80	80		30

:





The screenshot displays the IBM SPSS Statistics Data Editor interface. The main window shows a data grid with columns labeled 'sebelum', 'sesudah', and several 'var' columns. The 'Paired-Samples T Test' dialog box is open, with 'pre test [sebelum]' and 'post test [sesudah]' listed as paired variables. The 'Paired-Samples T Test: Options' sub-dialog is also open, showing a confidence interval percentage of 95% and the 'Exclude cases analysis by analysis' option selected. The status bar at the bottom indicates 'IBM SPSS Statistics Processor is ready'.

	sebelum	sesudah	var	var	var	var	var	var	var	var	var	var
14	80											
15	70											
16	80											
17	80											
18	75											
19	80											
20	80											
21	80											
22	70											
23	75											
24	70											
25	85											
26	85											
27	80											
28	80	80										
29	70	76										
30	70	76										

:

$$t = \frac{x^1 - x^2}{\sqrt{\frac{s_1^2}{n^1} + \frac{s_2^2}{n^2} - 2r \left(\frac{s_1}{\sqrt{n^1}} \right) \left(\frac{s_2}{\sqrt{n^2}} \right)}}$$

:
 : X^1
 : X^2
 : S^1
 : S^2
 : $S1^2$
 : $S2^2$
 : r
 : n^1
 : n^2
 :

Paired Samples Statistics

	Mean	N	Std. Deviation	Std. Error Mean
Pair 1 pre test	77.83	30	5.032	.919

	post test	78.67	30	2.187	.399
--	-----------	-------	----	-------	------

Paired Samples Correlations

		N	Correlation	Sig.
Pair 1	pre test & post test	30	.418	.022

Paired Samples Test

		Paired Differences				t	df	Sig. (2-tailed)	
		Mean	Std. Deviation	Std. Error Mean	95% Confidence Interval of the Difference				
					Lower				Upper
Pair 1	pre test - post test	-.833	4.572	.835	-2.541	.874	-.998	29	.326

:

(H₀) : -

(H_A): -

.		" SPSS "	-
	30		
.67 78		77.83	
	32 5		
		. 187 2	
.399 0			. 919 0
.418 0			
			.
		05 0	-
.		05 0	-
0000 0			
.			05 0

.
.
998 0
. 05 0 30 042 2
:
-
-