

**A SEMIOTIC ANALYSIS OF *A QUIET PLACE* MOVIE
USING CHARLES SANDERS PIERCE'S THEORY**

THESIS



**BY:
IZZAH SHAFWATI ABSHARINA
REG. NUMBER A93218109**

**ENGLISH LITERATURE DEPARTMENT
FACULTY OF ADAB AND HUMANITIES
UNIVERSITAS ISLAM NEGERI SUNAN AMPEL
SURABAYA
2023**

DECLARATION

I am the undersigned below:

Name : Izzah Shafwati Absharina
NIM : A93218109
Department : English Literature
Faculty : Adab and Humanities
University : UIN Sunan Ampel

Declare that the thesis entitled:

**Semiotics Analysis of *A Quiet Place* Movie Using Charles Sanders Pierce's
Theory**

is my own work, and not a plagiarism/fabrication in part or in whole.

If in the future it is proven that this thesis results from plagiarism/fabrication, either in part or whole, then I am willing to accept sanctions for such actions in accordance with the applicable provisions.

Surabaya, June 19th 2023

Who makes the statement



Izzah Shafwati Absharina

Reg. Number. A93218109

APPROVAL SHEET

A SEMIOTIC ANALYSIS OF A *QUIET PLACE* MOVIE USING CHARLES SANDERS PIERCE'S THEORY

by

Izzah Shafwati Absharina
Reg. Number A93218109

Approved to be examined by the board of examiners of English Literature Department, Faculty of Adab and Humanities, UIN Sunan Ampel Surabaya

Surabaya, June 19th 2023

Thesis Advisor



Suhandoko, M.Pd.
NIP. 198905282018011002

Acknowledged by
The Head of the English Literature Department



Endratno Pilih Swasono, M.Pd
NIP.197106072003121001

EXAMINER SHEET

This is to certify that the *Sarjana* thesis of Izzah Shafwati Absharina (Reg. Number A93218109) entitled *A Semiotics Analysis Of A Quiet Place Movie Using Charles Sanders Peirce's Theory* has been approved and accepted by the board of examiners for the degree of *Sarjana Sastra (S.S.)*, English Literature Department, Faculty of Adab and Humanities, UIN Sunan Ampel Surabaya.

Surabaya, July 5th 2023

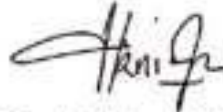
Board of Examiners:

Examiner 1



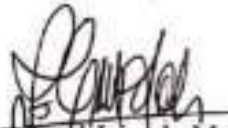
Suhandoko, M.Pd.
NIP. 198905282018011002

Examiner 2



Murni Fidiyanti, M.A.
NIP. 198305302011012011

Examiner 3



Raudhotul Jannah, M. App. Ling
NIP. 197810062005012004

Examiner 4



Endratno Pilih Swasono, M.Pd.
NIP. 197106072003121001

Acknowledged by:

The Dean of Faculty of Adab and Humanities
UIN Sunan Ampel Surabaya



Dr. Mohammad Kurjum, M.Ag
NIP. 196909251994031002

PUBLICATION AGREEMENT SHEET



KEMENTERIAN AGAMA UNIVERSITAS ISLAM NEGERI SUNAN AMPEL SURABAYA PERPUSTAKAAN

Jl. Jend. A. Yani 117 Surabaya 60237 Telp. 031-8411972 Fax 031-8413300
E-Mail: perpustakaan@uin-sby.ac.id

LEMBAR PERNYATAAN PERSETUJUAN PUBLIKASI KARYA ILMIAH UNTUK KEPENTINGAN AKADEMIS

Sebagai pejabat akademik UIN Sunan Ampel Surabaya, yang bertanda tangan di bawah ini, saya:

Nama : Izzah Shafwati Absharina
NIM : A93218109
Fakultas/Jurusan : Adab dan Humaniora/Sastra Inggris
E-mail address : izzahsabsarina@gmail.com

Demi pengembangan ilmu pengetahuan, menyetujui untuk memberikan kepada Perpustakaan UIN Sunan Ampel Surabaya, Hak Bebas Royalti Non-Eksklusif atas karya ilmiah:

Skripsi Tesis Disertasi Lain-lain (.....)

yang berjudul:

A SEMIOTIC ANALYSIS OF A *QUIET PLACE* MOVIE USING CHARLES SANDERS
PERCI'S THEORY

bersama perangkat yang dipublikasi (jika ada). Dengan Hak Bebas Royalti Non-Eksklusif ini Perpustakaan UIN Sunan Ampel Surabaya berhak menyimpan, mengalih media/cetak/cetak, mengedit/memodifikasi, dan menyediakan dalam bentuk elektronik atau digital, mendistribusikan, dan mempublikasikannya di Internet atau media lain tanpa dibatasi oleh kemampuan teknis tanpa perlu meminta izin dari saya selama tetap mencantumkan nama saya sebagai penulis/penulis dan atau pembuat yang bersangkutan.

Saya bersedia untuk menanggung secara pribadi, tanpa melibatkan pihak Perpustakaan UIN Sunan Ampel Surabaya, segala bentuk tuntutan hukum yang timbul atas pelanggaran Hak Cipta dalam karya intelektual saya di.

Demikian pernyataan ini yang saya buat dengan sebenarnya.

Surabaya, 16 Juni 2025

Pembaca

(Izzah Shafwati Absharina)

ABSTRACT

Absharina, I. S. (2023). *A Semiotics Analysis of A Quiet Place Movie using Charles Sanders Pierce's Theory*. English Literature Department, Faculty of Adab and Humanities, UIN Sunan Ampel Surabaya. Advisor: Suhandoko, M.Pd.

The study aims to analyze the type of sign in *A Quiet Place* movie. There are two problems to be solved in this study, namely: (1) what are the sign that represents icons, symbols, and indexes in *A Quiet Place* movie and (2) what is the meaning of the icons, symbols, and indexes found in *A Quiet Place* movie.

This study uses descriptive qualitative approach in relation to use of clear and systematic description about the movie being studied. Descriptive study was applied in this study for collecting the part of the scene and explains the meaning of icons, symbols, and indexes of *A Quiet Place* movie. The data were collected by taking a screenshot of the sign that consists icon, symbol, and index. The analysis continued by identifying, classifying the captured scene that indicates the type of signs that found in *A Quiet Place* movie. Finally, find the meaning behind every scene by looking at the icons, symbols, and indexes has already found.

This study reveals that many signs that can be found in *A Quiet Place* movie, the sign contain icons, symbols, and indexes. And all of these signs represent a meaning that found in the movie. Many signs that can be found in the film, starting from icons that can be found from objects, realistic paintings, artefacts, and lighting. Symbols can be found in alphabets, gestures, expressions, and books. Indexes can be found from situations and storylines in each scene. All of these parameters play a significant role in finding icons, symbols, and indexes as well as finding hidden meanings that the meaning exist in this movie mainly uses non-verbal communication.

Keywords: semiotics, movie, *A Quiet Place*

UIN SUNAN AMPEL
S U R A B A Y A

ABSTRAK

Absharina, I.S. 2023. *Analisis Semiotika Film A Quiet Place Menggunakan Teori Charles Sanders Peirce*. Program Studi Sastra Inggris, Fakultas Adab dan Humaniora, UIN Sunan Ampel Surabaya. Pembimbing: Suhandoko, M.Pd.

Penelitian ini bertujuan untuk menganalisis jenis tanda dalam film *A Quiet Place*. Terdapat dua permasalahan yang akan diselesaikan dalam penelitian ini, yaitu: (1) apa saja tanda yang merepresentasikan ikon, simbol, dan indeks dalam film *A Quiet Place* dan (2) apa makna dari ikon, simbol, dan indeks yang ditemukan? dalam film *A Quiet Place*.

Penelitian ini menggunakan pendekatan kualitatif deskriptif dalam kaitannya dengan penggunaan deskripsi yang jelas dan sistematis tentang film yang diteliti. Studi deskriptif diterapkan dalam penelitian ini untuk mengumpulkan bagian adegan dan menjelaskan makna ikon, simbol, dan indeks film *A Quiet Place*. Pengumpulan data dilakukan dengan mengambil screenshot dari tanda yang terdiri dari ikon, simbol, dan indeks. Analisis dilanjutkan dengan mengidentifikasi, mengklasifikasikan adegan yang ditangkap yang menunjukkan jenis tanda yang ditemukan dalam film *A Quiet Place*. Terakhir, temukan makna di balik setiap adegan dengan melihat ikon, simbol, dan indeks yang sudah ditemukan.

Penelitian ini mengungkapkan bahwa banyak tanda yang dapat ditemukan dalam film *A Quiet Place*, tanda tersebut mengandung ikon, simbol, dan indeks. Dan semua tanda tersebut mewakili makna yang terdapat dalam film tersebut. Banyak tanda yang dapat ditemukan dalam film tersebut, mulai dari ikon yang dapat ditemukan dari objek, lukisan realistik, artefak, hingga pencahayaan. Simbol dapat ditemukan dalam huruf, gerak tubuh, ekspresi, dan buku. Indeks dapat ditemukan dari situasi dan alur cerita di setiap adegan. Semua parameter tersebut berperan penting dalam menemukan ikon, simbol, dan indeks serta menemukan makna tersembunyi yang makna yang ada dalam film ini terutama menggunakan komunikasi non-verbal.

Kata kunci: semiotika, film, *A Quiet Place*

TABLE OF CONTENTS

Inside Cover Page	i
Declaration	ii
Approval Sheet	iii
Examiners' Sheet	iv
Publication Agreement Sheet.....	v
Abstract	vi
Abstrak	vii
Table of Contents	viii
List of Figures	x
CHAPTER I INTRODUCTION	
1.1 Background of the Study.....	1
1.2 Problems of the Study	7
1.3 Objective of the study	8
1.4 Significances of the Study.....	8
1.5 Scope and Delimitations	9
1.6 Definition of Key Terms	9
CHAPTER II REVIEW OF RELATED LITERATURE	
2.1 Semiotics	10
2.2 Charles Sanders Peirce Semiotics Theory.....	11
2.3 A Quiet Place Movie.....	13
CHAPTER III RESEARCH METHOD	
3.1 Research Design.....	15
3.2 Data Collection.....	16
3.2.1 Research Data.....	16
3.2.2 Data Sources.....	16
3.2.3 Research Instrument.....	16
3.2.4 Data Collection Technique.....	17
3.3 Data Analysis Technique	17
CHAPTER IV FINDINGS AND DISCUSSION	

4.1 Findings.....	21
4.2 Discussion	46
CHAPTER V CONCLUSIONS AND SUGGESTIONS	
5.1 Conclusions	51
5.2 Suggestions	52
REFERENCES.....	53
CURRICULUM VITAE	55



UIN SUNAN AMPEL
S U R A B A Y A

LIST OF FIGURES

Figure	page
Figure 2.2 Triadic Model	22



UIN SUNAN AMPEL
S U R A B A Y A

CHAPTER I

INTRODUCTION

In this section, the researcher presents the study's background, consist of background of the study, problems of the study, objective of the study, significance of the study, scope and delimitations, and definition of key terms.

1.1 Background of the Study

Language is a system of arbitrary vocal symbols used by human communication of a particular society (Wardough, 1977, p.3). Language is a part of daily communication, especially for everyday activities. We use language to express feelings, ideas and to build a relation in society also to deliver a message. “Language is a sign, a code, or a communication sound system that is agreed by a certain group of society” (McGraw-Hill Paperback 1966, p.16). Human is social creatures who need language to communicate every day. Some people communicate, but sometimes they didn't understand what they are talking about, one example of an obstacle in communicating is language.

Different countries and types of languages sometimes make communication difficult. Therefore, learning semiotics can make communication easier. Semiotics is a study of a sign process that exists in our daily life or daily activities. According to Chandler, D (2002), Semiotics in a semiotic sense, signs take the form of words, images, sounds, gestures and objects. Studying semiotics is very helpful when we cannot know the meaning of someone's words with just a

sentence but can also see the gesture or look on the person's face because humans have a gesture that can be used as a medium to convey the sentences that we say.

In this modern era, people not only use language to communicate, but language also can be used to convey messages or advertisements on television, radio, magazines and newspapers. They use the media to convey the purpose of their product that they want to advertise. Movie is one of an interesting industry for people who want to communicate their new perception about the sign that consist in the movie. Robert (cited in Britannica, 2022) states that “movie is a series of photograph projected in rapid succession onto a screen to convey drama especially in the evocation of emotion”. A movie is a recording scene, image, gesture, sound and dialogue that tells a story or communicates messages that people can enjoy by watching it on a digital platform like the internet and television. According to Britannica (2022), the characteristic of a movie is the qualities of the movie image, intensity, intimacy, ubiquity, particularity, and, neutrality. Sometimes creating a movie can be a medium to tell someone real-life journey or sometimes it becomes a media to express the writer feeling and deliver the feeling into a great movie. Movie is one of the unique media or art production that has a big impact and affects the audience because from watching movies we can learn many things especially visual communication.

Sometimes messages inside the movie are often display in various ways through the words of characters, scenes, locations, and signs or symbols. Semiotics is a study of sign, not only analyzing text but also able to analyze pictures, scenes of a movie, posters, etc. One of the writers of semiotics theory is

Charles Sanders Peirce. According to Chandler (2007, p.33), the triadic basis of this model enables it to operate as more general model of sign than the dyadic model. Peirce believes that there is a model of sign that contains icon, symbol and index.

Ferdinand de Saussure (1900) found a theory about signs named dyadic model consisting of signifier and signified. Signifier is a physical existence, and signified is a mental concept. Moreover, the type of sign in semiotics field also has a triadic model from Charles Sanders Peirce (1960) that already found the second view of semiotics. He claims there are three sides of semiotics consist of representamen, interpretant and object. These three topics are referred by Peirce as semiotics. According to (Sebeok, 1999, p.1), all of the sign exegesis studies are traditional. In human life, signs serve many functions. They allow people to recognize patterns in things; they act as predictive guides or plans for taking actions; they serve as exemplars of specific kinds of phenomena and the list could go on and on. Representamen consist of three categories, the first is qualisign, sinsign, and legisign. Interpretant consist of rheme, dicisign, and argument. Objects consist of icons, symbols and indexes. All type of the signs has their own meaning to create good communication and connect people around the world.

Furthermore, language is not only about spoken language but can also related with icons, symbols, and indexes. An icon is a form of image or iconic thing not only about form of image or iconic thing that representing an object or a product but also philosophy of a brand (simplified version). We can find an icon in the street such as traffic signs, road signs, painting, maps, pictures/logos of a restaurant, mall, clothing store, etc those icon can help a tourist or people who

travel outside the city so they can find a place or an address with looking the icon. Symbols is a word or picture that explain the sign with different rules and usually the sign can be identified as a symbol depends on the situation, symbol contain conventional (social agreement) also symbol pattern is refers to its object to interpretive habit or norm of reference. And the last is an index, index is a pattern of some sensory features to something else, the explanation about a symbol of an icon. The signifier is not arbitrary but directly related in people's mind. This means it can be inferred or observed such as smoke is an index of fire.

A study about semiotics which refers to the theory by Charles Sanders Pierce's triadic model in the John Wick 1 movie conducted by Alfian Asyraq Pauzan (2018) in UIN Alauddin Makassar entitled *A Semiotics Analysis of the John Wick 1 Film Using Charles Sanders Pierce's Semiotics Theory*. Analyzed the types of the sign that exist in the movie. This research used an action movie entitled John Wick 1 movie as his substance research. The researcher watched the movie and used documentation technique to collect the data and use qualitative method to analyze the data. The writer only focused in the analysis of the sign as the object of the study which include icons, symbol, and indexes and he founds sixteen icons, twelve indexes, and nine symbols and classified the data that exist in John Wick 1 movie using triadic model by Charles Sanders Pierce.

Second previous study comes from Gufran Putra Nurkia (2018) in State Islamic University Suthan Thaha Saifuddin Jambi entitled *The Analysis of Symbols in Kingdom of Heaven Film by Ridley Scott*. The writer used an action movie entitled Kingdom of Heaven movie as his substance research. The writer

used documentation technique to collect the data. The writer only focused in the analysis of the symbol sign as the object of the study and he founds 5 kinds of conventional symbol inside this movie which are color, object, clothing, animal, and nature. First is color, the writer found white, blue, and red. Second is object, the writer found a ring, sword, and crown. Next is clothing, the writer only found a mask. Next is animal, the writer found buzzard or vulture and donkey. And the last is nature, the writer found water, flower, and river. The total of the conventional symbol that the writer found is 12 symbols that exist in Kingdom of Heaven movie.

Another study comes from Junika Dewi (2021) in USU Medan entitled *A Visual Semiotic Analysis on the Spongebob Movie*. The writer used a cartoon movie entitled *Spongebob: Sponge Out of Water* movie as her substance research. The writer used framing technique (identified based on what the picture shows) to collect the data. The writer focused in the analysis of sign as the object of the study which includes qualisign, icon, and rheme inside *Spongebob: Sponge Out of Water* movie. The writer found 29 snapshot and qualifying these snapshots into 19 data of qualisign from spongebob (the main character) as the object, and Patrick star (the secondary character) as the rheme.

Dyah Ayu Rizky (2018) in Universitas Muhammadiyah Surakarta entitled *Studi Analisa Semiotika dalam Film Animasi Inside Out*. The writer used a cartoon movie entitled *Inside Out* movie as her substance research. The writer watched the movie and used documentation technique to collect the data. The writer used Roland Barthes theory for this research which include denotation and

connotation and he founds two different criteria physical and clothes that represent emotion in the Inside Out movie.

Mira Amalia (2022) in State University of Sunan Ampel Surabaya entitled *Semiotics Analysis of Disney Poster*. The writer used Disney poster. Cinderella poster Disney, Beauty and The Beast poster Disney, Aladdin poster Disney, Mulan Disney poster. The writer searched a few Disney posters and used descriptive-qualitative method to collect the data. The writer used Charles Sanders Pierce theory for this research which include triadic model and she founds the meaning behind every Disney poster by analyzing it.

Many research above show that semiotic analysis with triadic model by Charles Sanders Pierce success reveal the meaning inside the movie. However, to the best of the researcher knowledge there has been no research analyzing meaning that exist inside movie that don't involve conversation as the data. Often, researchers try to understand the context of signs by looking at conversations, but rarely do they only understand messages based on gestures and signs shown in the movie. *A Quiet Place* Movie is about family that forced living with silent and can only use gesture and sign language communicated. Using the triadic model of sign by Charles Sanders Pierce, the researcher wants to find the hidden meaning inside this movie with analyze the icons, symbols, and indexes that exist in *A Quiet Place* Movie.

A Quiet Place is a popular movie directed by John Krasinski was produce in 2018. *A Quiet Place* tells the story of four family members or we can call it the 'Abbot Family' lead by the husband named Lee, the wife named Evelyn that nine

months pregnant, deaf teenage daughter Regan, and younger sons Marcus and Beau who have to live in silence while hiding from creatures that hunt with sound. Because they had a deaf daughter so the family member available to talk with a body language and they should live in silence. This situation forces them to live their daily lives are filled with gestures and signs to communicate in order not to make any noise at all. This movie is a perfect media to learn about sign in semiotics. *A Quiet Place* Movie use a lot of sign language to communicate because the monster inside this movie sensitive to sound. A lot of scenes of this movie that can be represent model of sign by Charles Sanders Pierce.

The reason why the researcher used *A Quiet Place* movie as the data in her analysis because many scenes in this movie used body language to communicate with each other, the resident had to remain silent to survive. The main character of this movie use light as a sign if there is a danger other than for lighting, build a secret soundproof room for their children to play. There are several symbol that exist in this movie to make a sign when the monster coming, the example is sign language, light, drawing, firecrackers. Besides, the researcher wants to know what is the true meaning behind every code, symbol, and situation that happens inside *A Quiet Place* movie using C.S Pierce's triadic model.

1.2 Problems of the Study

Based on the background and the focus of the study, the questions are formulated for getting more specific purpose. The researcher questions are:

1. What are the signs that represent icons, symbols, indexes in *A Quiet Place* movie?

2. What is the meaning of the icons, symbols, and indexes found in *A Quiet Place* movie?

1.3 Objectives of the Study

The researchers stated objective of the study as seen below:

1. To find the sign that represents icons, symbols, and indexes in *A Quiet Place* movie using triadic model by Charles Sanders Pierce in semiotics analysis
2. To find the meaning of icons, symbols, and indexes in *A Quiet Place* movie using triadic model by Charles Sanders Pierce in semiotics analysis

1.4 Significances of the Study

The researcher expects that this research can serve knowledge and obvious contribution in the field of language especially on the analysis of icons, symbols and index that included in semiotics. This research was conducted to identify and analyze the scene inside the movie and looking for objects or situation that can be associated with the sign on *A Quiet Place* movie. The results of this research are expected that the watcher able to interpret meaning of movie, not only the plot but also aware about the meaning beyond the conversation, what's the reason behind every scene and sign that found inside movie so the watcher able to have better understanding meaning of the movie correctly.

1.5 Scope and Delimitations

This research used *A Quiet Place* movie by John Krasinski as the data source. The researchers will limit the subject of the research only on analyzing the sign contain icon, symbol, and index that exist inside the movie and identifying the sign using triadic model by Charles Sanders Pierce that appear along the *A Quiet Place* movie. The researcher focused on analyzing the meaning of icon, symbol, and index that found inside the movie by pay attention to the signs, if there are a dialogue it will not be the focus of the research. The limitation intended to make the research focuses on the sign that exist in the movie.

1.6 Definition of Key Terms

1. Icon is a form of image or iconic thing that represents an object or a product.
2. Symbol is a word or picture that explain the sign with different rules and also usually the sign can be identified as a symbol depends on the situation
3. Index is a pattern of some sensory feature to something else, the explanation about a symbol of an icon.
4. *A Quiet Place* is a movie that contains moving picture and gesture that tells a story with horror and mystery genre that have interpretation of images, gesture and meanings behind the storyline.

CHAPTER II

REVIEW OF RELATED LITERATURE

In this chapter discuss about semiotics theory from Charles Sanders Pierce using triadic model of sign, the first sign is physically similar sign called icon, an arbitrary and conventional sign called symbol, and direct connection sign called index.

2.1 Semiotics

Semiotics is a study of sign. Semiotic also known as semiology refers to the knowledge that learns about sign system in a language. Types of semiotics are classified into two dominant contemporary models, semiotics model by Ferdinand de Saussure and the American philosopher Charles Sanders Pierce.

Ferdinand De Saussure (1857- 1913). Semiotic is a knowledge that studied about the sign as a part of social life. Saussure believe that semiotics divided into two different point or dyadic model, there are signifier and signified. Signified is physical existence such as sound, word, image, and signified is a concept that is associated with the signifier. Two kinds of semiotic concepts developed by Saussure are enhanced by the presence of an upcoming theory of an American philosopher Charles Sanders Pierce.

Charles Sanders Pierce (1857-1914). Pierce developed semiotics in the United States, “Peirce’s theory are the human mind and sign boundaries, the three-dimensional system (triadic/trichotomy) and the relativity regarding the three typologies or taxonomies of signs (icon, index and symbol)”

(Sendera&Totu, 2014). Moreover, sign also have triadic model consist of representamen, interpretant and object. Representamen same with signifier is the form of the sign, representamen consist of three categories, the first is qualisign, sinsign, and legisign. Interpretant same with signified is the sense that made a sign which include rheme, disign, and argument. And the last, object meaning is what the sign represent an object that contain icon, symbol, and indexes.

According to the explanation above, semiotics is not only about study of sign but also analyzes the red line or the relationship of the two signs that have been found, the causes and the meaning of all the signs found to describe surrounding phenomenon that occur in everyday life.

2.2 Charles Sanders Peirce Semiotics Theory

This theory comes from Charles Sanders Peirce which studies in semiotics fields. Peirce states that sign is a representative of something for something. Unlike the dyadic model by Saussure, Charles Sanders Peirce formulated a new model of sign named triadic model consist of:

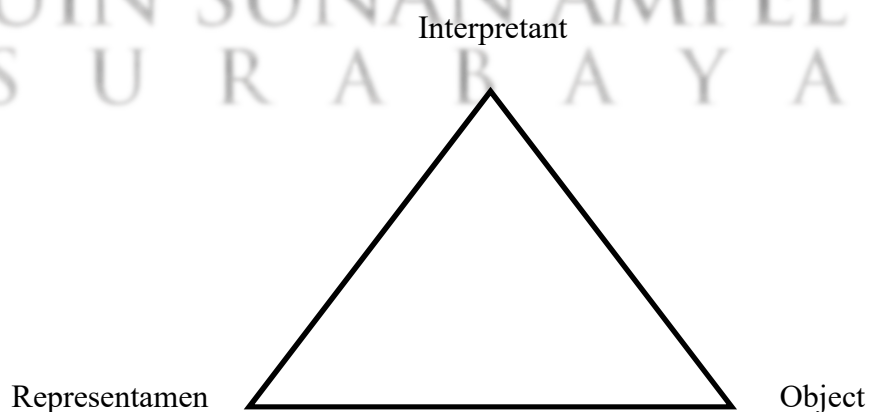


Figure 2.2 Triadic Model

According to Peirce (1958), a sign or *representamen* is something that stands to somebody for something in some respect or capacity. It addresses somebody, which creates in the mind of that person an equivalent sign, or perhaps a more developed sign. That sign which it creates I call the *interpretant* of the first sign. The sign stands for something, its object. It stands for that *object*, not in all respects, but in reference to a sort of idea, which I have sometimes called the ground of the representamen. Charles Sanders Peirce classified sign into three types, icon, symbol, and index:

1. Icon: The form of the sign, most of icon is physically similar picture that explain the sign. The signifier is perceived as resembling or imitating the signified by picture, sound, or smell of something. The example is starbucks logos is the brand and the national flags is a flag of the country.
2. Symbol : The sign represents an object. not only about form of image or iconic thing that represent an object or a product. Symbol use different rules and also usually the sign can be identified as a symbol depends on the situation. Symbol is arbitrary or purely conventional picture, to identify a symbol must be agreed upon and learned. The example is a Starbucks building with *S-T-A-R-B-U-C-K-S* writing under the Starbucks logos means that Starbucks is a coffee shop.
3. Index : A sense that made of a sign or same with signified is the sense that made a sign. Another definition is a pattern of some sensory feature to something else or the signifier is not arbitrary but it's directly connected physically of casually to the signified (natural sign). The explanation about

symbol of an icon. The example is people around drink some coffee is index of Starbucks coffee shop

2.3 A Quiet Place Movie

A Quiet Place is horror movie that produce in 2018, crowned as an American horror mystery movie directed by John Krasinski and written by Bryan Woods. *A Quiet Place* tells the story of a world that is almost over or a world disaster and there are creatures that come to earth to attack humans. This monster has very high hearing power but is blind, this monster will only attack humans who make sounds, slogans have been spread throughout the city that read "Be Quiet and Lives" about a family consisting of a husband, wife who is 9 months pregnant, and 3 of them are children who are deaf. Have 5 family members namely Lee Abbott as the head of the family, Evelyn Abbott as the mother, and 3 children named Regan the first daughter, Marcus Abbott the second son, and Beau Abbott as the last son. One day this Abbott family wanted to move from the city to the country side because the city was too crowded and noisy, it could make a lot of noise. The little deaf boy found his favorite toy, a 'rocket', but the Lee said it made too much noise. Secretly the Regan gave the toy to her sister because she looked very sad and lonely. Long story short, their Beau has become a victim of a monster for turning on his toy on their way to the countryside.

Several days to months passed in their new home, their house made as comfortable as possible with all the codes and lights to signal when danger was coming without screaming. The day comes when Evelyn will give birth to her child, this very clever film makes a super good plot that is unthinkable in the

brain, making the basement with the walls lined with newspapers which are glued in layers to create a soundproof room.

But their plan did not go as smoothly as expected, the spike on the stairs made the Evelyn leg hurt when going down the stairs, plus Regan who often caused trouble so that the creatures could hear voices from inside their house, instantly the strange creature broke the whole house Fortunately Evelyn and baby are still safe, while their two children are trapped in a barn filled with rice waiting for Lee to save them all. At the end of the story Lee must sacrifice himself rather than sacrifice his three children and wife.

Turned out that the father had done research on how to kill this strange creature, Lee made a hearing aid with high frequency in order to damage the strange creature hearing, it turned out that his findings were correct, the strange creature hearing was disturbed and made the strange creature weak and lost control, that's when Evelyn pull the shotgun trigger to kill all those monsters.

UIN SUNAN AMPEL
S U R A B A Y A

CHAPTER III

RESEARCH METHOD

This chapter presents about the method that the researcher used to collect and analyze the data in this chapter include research design, data collection, and data analysis.

3.1 Research Design

This study used a descriptive qualitative approach by conducting a semiotic analysis of *A Quiet Place* movie. Qualitative research is an inquiry process of understanding based on distinct methodological traditions of inquiry unquantifiable data and to examining the nature of something in various social settings. This research interest is in the way humans understood their surroundings and described the phenomena in terms of the meanings people bring to them. “The researcher builds a complex, holistic picture, analyzes words, reports detailed views of informants, and conducts the study in a natural setting” (Cresswell, 1994).

The descriptive approach is adopted for collecting the part of the scene of *A Quiet Place* movie and explains the meaning of icons, symbols, and indexes that are already found in the scene. The purpose is to present a research analysis related to the theory of sign proposed by Charles Sanders Peirce in *A Quiet Place* movie.

3.2 Data Collection

In this section, data collection used to collect and explain the data. The data collection contains research data, data sources, research instrument, and data collection techniques.

3.2.1 Research Data

The data of this research focused on the type of sign in *A Quiet Place movie (2018)*. The researcher analyzed the data by collecting the scene of the movie that shows icon, symbol, and index. Several scenes will be a screenshot from Apple TV and analyze the data using triadic model by Charles Sanders Pierce. The data sources of *A Quiet Place* movie in a form of symbol, gesture, sign language, and light.

3.2.2 Data Sources

The source of the data is a screenshot of *A Quiet Place* movie. The researcher used a movie that had already released on the official web. The duration of this movie is 3 hours 36 minutes.

3.2.3 Research Instrument

The instrument of this research is the writer herself. In this case, the researcher analyzes the data by collecting screenshot scenes of the movie. Besides the other instrument used in this research is an official web movie to find the data to search the sign on *A Quiet Place* movie. The researcher watches the movie on Apple TV.

3.2.4 Data Collection Technique

According to Dimagi (2018), Data collection is the process of gathering quantitative and quantitative and qualitative information on specific variables. The data in this research was collected from *A Quiet Place* movie by John Krasinski.

The data collection techniques are described as follows:

1. The researcher watched *A Quiet Place* movie from Apple TV to get a better understanding of the sign that was already found in the movie.
2. The researcher screenshots the scene sign in *A Quiet Place* movie by some parameters that fulfill the icon, symbol, and index element that can be analyzed using the triadic theory by Charles Sanders Pierce. Scenes with pictures, objects, realistic paintings, artifacts, and lightning are categorized as icons. Then, scenes that had an alphabet, stop sign, gesture, traffic sign, books, facial expression, color sign, and sign language were categorized as symbols. Last, the scene that had the meaning of the situation inside the screenshot of the scene builds a storyline categorized as indexes.
3. Then, the researcher gave a mark in the picture indicating the icons, symbols, and indexes inside the movie.

3.3 Data Analysis Technique

The researcher identified the captured scenes that indicate the types of signs found in *A Quiet Place* movie. The researcher identified the sign and classified the sign using triadic model by Charles Sanders Pierce. The researcher makes a table to categorize each of the signs of icon, symbol, and index.

1. Identifying the data

The researcher identified the icons, symbols, and indexes in a captured scene inside *A Quiet Place* movie with Charles Sanders Peirce's theory. To find a meaning behind icons, symbols, and indexes found in *A Quiet Place* movie that already described. The researcher identified the movie using semiotics theory by Charles Sanders Peirce's model of signs consist of an icon, symbol, and index inside the movie. The researcher used a screenshot of *A Quiet Place* movie scene to identify the data. For the icons, the researcher gives a sign in the form of a red circle. For the symbols, the researcher gives a sign in the form of a yellow square. And for the indexes, the researcher gives an arrow pointing to the situation being analyzed in the screenshot data.

2. Classifying the data

After identifying the data, the researcher classified the data into three triadic models of signs. The model is an icon, the second is a symbol, and the last model is an index. The researcher uses narrative text to find hidden meaning from the data that already found.

- a. Icon: a sign that signifies the object through similarities or a literal (picture, object, realistic painting, artifact, lightning)
- b. Symbol: a sign that signifies the object through arbitrary and conventional rule or implied sign (alphabet, stop sign, gesture, traffic sign, books, facial expression, color sign, conventional sign, arbitrary sign)

- c. Index: a sign that signifies the object through physical and casual connection or a learned sign (the meaning of the situation)



Sign	Data	Interpretation
Icon	(1) Rusty traffic light	Haven't used it in a long time
Symbols	(1) 3 color of traffic light (red, orange, green)	Indicate the rule of the street
Index	(1) Broken traffic light because the traffic light abandoned in the middle of the road and rusted	Nobody has passed this street

3. Describing and interpreting the data

After classifying the data, the researcher finds the connection of icons, symbols, and indexes and describes the meaning hat found in *A Quiet Place* movie using Charles sanders pierce triadic theory and interpreted the sign.

4. Discussing the result of the study

After describing and interpreting the data, the result of the research discussed using semiotic triadic modal by Charles Sanders Pierce and the results of the relevant previous studies

5. Concluding the result of the study

After discussing the data, the researcher draw conclusions about the meaning of every scene inside *A Quiet Place* movie consists of icons, symbols, and indexes.



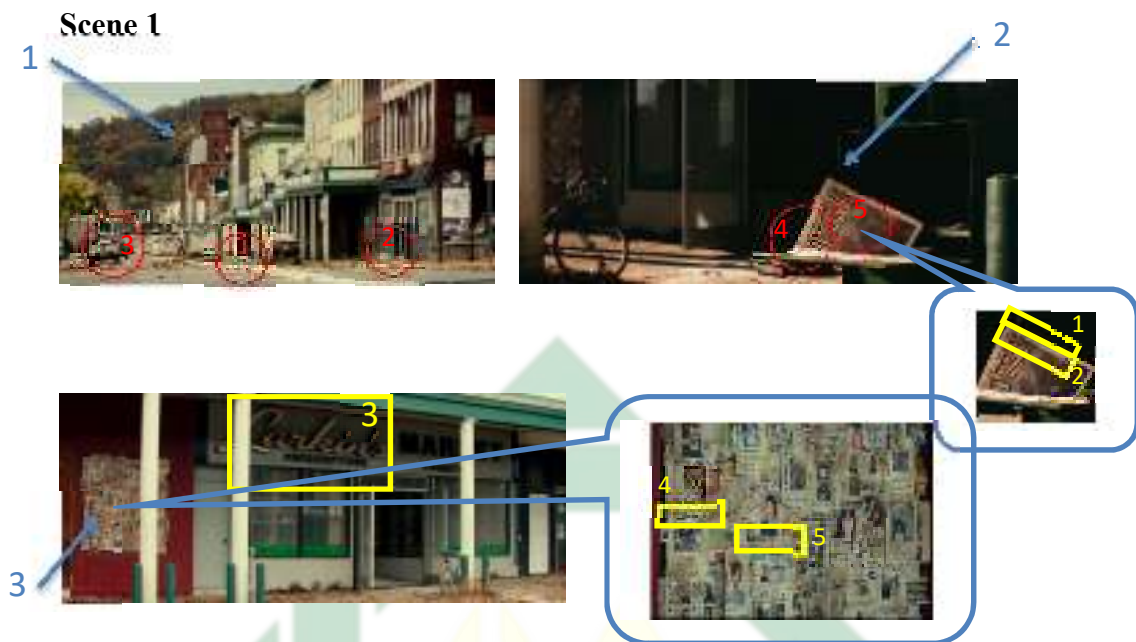
CHAPTER IV

FINDINGS AND DISCUSSION

In this chapter, the researcher analyzes the result of the semiotics model through data analysis processes. The finding and discussion of this movie provide to answer the research question.

4.1 Findings

The researcher finds the sign inside this movie contain icons, symbols and indexes that found in *A Quiet Place* Movie. The signs consist of, icons, symbols, and indexes. An icon is a sign that signifies the object through similarities or relation between the sign and object which can be the form of picture, object, realistic painting, artifact, and lightning. A symbol is a sign that signifies the object through arbitrary and conventional rule between sign and object that can be found in alphabet, stop sign, gesture, traffic sign, books, facial expression, color sign, conventional sign depends the situation. Then, an index is a sign that signifies the object through physical and casual connection based on the correlation between scenes or events that are considered the same or repeated case. The researcher analyzes the icons, symbols, and indexes and find the meaning behind every scene that exist in *A Quiet Place* movie. This study aims to answer the two research questions, but in this section the researcher presents the answers simultaneously in the form and meaning from *A Quiet Place* movie, because these two aspects are related and cannot be written separately.



Sign	Data	Interpretation
Icon	(1) Chalk powder lining on the street	Tracks
	(2) Leaves	No human activities
	(3) Abandoned cars	Town left by the people
	(4) Newspaper	Information about the town
	(5) Strange creature picture inside the newspaper	Creature that attacks the town
	(6) People picture on window	The resident missing picture
Symbol	(1) NEW YORK POST	This scene took place in New York City
	(2) I'TS SOUND	Indicate the strange creature is sensitive with sound
	(3) Larkin's prescription	abandoned drugstore that sells medicine
	(4) MISSING	The resident tries to find their missing family in this town using poster
	(5) PLEASE CALL	Those who find missing persons can contact the number on the poster

Index	(1) There are no people passing by on the road or doing activities along the way	The government has given orders to lock down and hide from strange creature attacks so everybody leave the town after noticing the news.
	(2) New York City attacked by strange creature that sensitive with sound	Based on the news, the strange creature sensitive with sound and all the people should keep quiet
	(3) Many people missing in the city because the strange creature attack	Many people were separated from their families when this attack came

Scene 1 describes about the problem that happened in New York City. Strange creature attacks make the whole city have to be locked down, it is known that this strange creature is very sensitive to sound known from newspapers that have been officially published. As much as possible, residents must hide and live in silence and the rest has already leaved the town. Many shops and cars are abandoned, a lot of fallen leaves are scattered, cars that are only parked on the side of the road but abandoned by their owners due to a very dangerous situation. Many people also disappeared as a result of this incident, many families put up posters in one of windows shops containing pictures and information in case somebody meet one of the missing people on the poster, hoping everyone could still find their missing family. The use of chalk powder it's the safe route to walk, it can muffle the sound of walking feet, can also prevent the feeling of heat produced by the asphalt during the day and it doesn't melt easily when exposed to rain, so it's very effective as a road marker.

Scene 2:



Sign	Data	Interpretation
Icon	(1) Chalk powder along the way	Direction
	(2) Railroad	They walk pass under the railroad tracks
	(3) Bridge	The border between the cities and their new destination
	(4) The rocket toy	Last child's toy
	(5) Trees	Journey through the forest
Symbols	(1) Barefoot	Didn't use footwear so it doesn't make a lot of noise
	(2) Red color at rocket toy hold by the boy	The rocket toy is turned on when it is played
	(3) The mother and her first daughter covering mouth with hand gesture	They make a hand sign for her child to remind silent
	(4) The father running gesture	Save his child

Index	(1) The family walking following chalk route that already made for safety	the whole family moving from the city into somewhere safer than in the city
	(2) The attack of strange creature because the rocket toy makes a sound.	The strange creature attacks the son because he turns on the toy rocket and accidentally makes a sound

Scene 2 describe about a family consist of five people called Abbott family wanted to move from the city to a quieter place to survive. They walk from the city into the safer place following the chalk powder across railroad and bridges. The chalk powder that was scattered throughout this place really helped the residents to stay safe when moving places. This chalk powder deliberately scattered along the road as a sign that there are still quite a few people still living in this area. They must remain bare foot when walk to minimize noise sound when using footwear such as sandals or shoe. They walk sequentially starting from the Lee Abbott carrying Marcus Abbott, Evelyn Abbott, Regan Abbott. Then behind is Beau Abbott following. Beau is walking following his family while playing with his rocket toy he has, red indicator on the rocket toy explains that this toy is turn on and when the toy turns on it must be followed by the sound from the toy. The sound from this toy can be heard by a strange creature. Lee run as fast as he can to save his son from the attack of the strange creature while Evelyn and Regan gave a sign by cover their mouths so Beau turned off the toy and remained silent. But it was too late, a strange creature came quickly and attacked Beau.

Scene 3

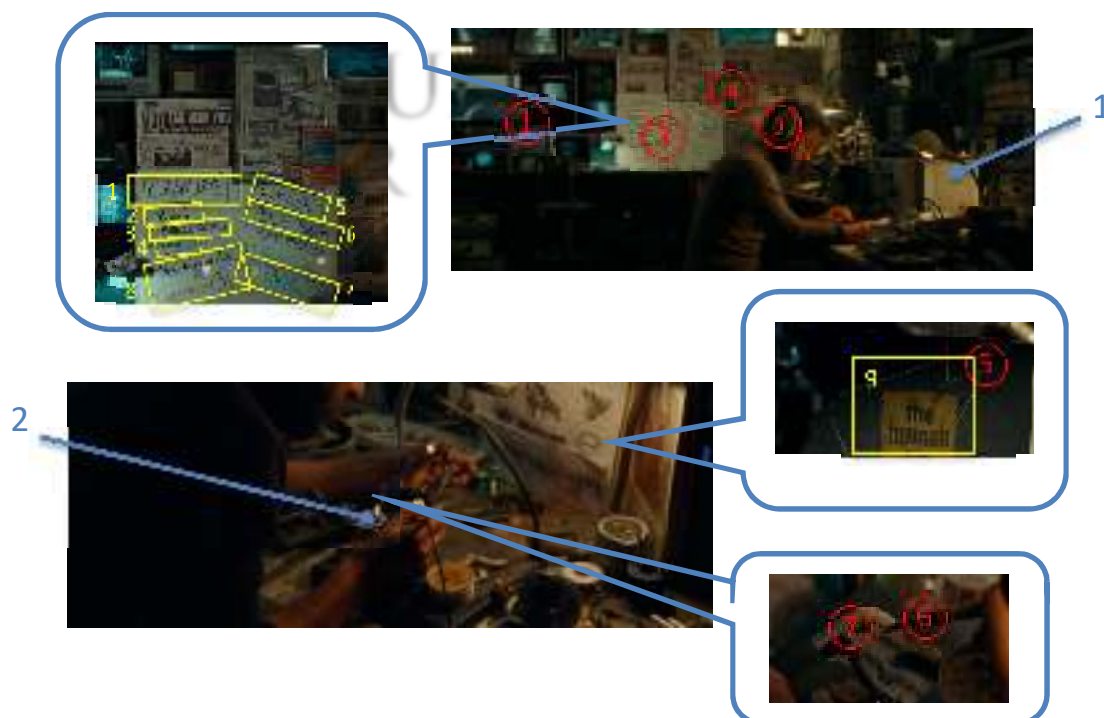


Sign	Data	Interpretation
Icon	(1) Chalk powder	A sign that this house is inhabited
	(2) Rocks	This land is far away from the town
	(3) Fall leaves	There are many trees around the house
	(4) Wild plants	The house that was found had never been properly maintained
	(5) Trees	In the middle of forest
	(6) Fish trap	Catching fish to survive
	(7) Farm	The family live in the farm
	(8) Newspaper	Used to muffle sound on walls
	(9) Glue and brush	Attach newspapers to the wall and can be a medium to muffle sound
Symbols	(1) The House	A house abandoned by its owner
	(2) The river flow	The river flow is very fast
	(3) Hand sign next to Lee ear	Asking Marcus to listen to the sound of the river flowing

Index	(1) Found a house to live	The house that had been abandoned by the owner became the home that their family now lives in
	(2) Daily activities to survive	Do everything within the limits to survive

Scene 3 describes how the Abbott family survive. They occupy a house in the forest, choosing to go to the forest because the forest is one of the quietest places and far from the city. They survive by staying indoors but doing activities in the basement. They deliberately stuck newspapers on the basement walls using glue so that the basement could be soundproof. Don't forget to spread chalk as a sign to travel so you don't get lost considering this house is located in the forest. Every day the Abbott family went to the river to catch fish and eat from the catch. The only place that is safe from the reach of strange creatures is in the river because the sound of flowing water can overpower human voices.

Scene 4

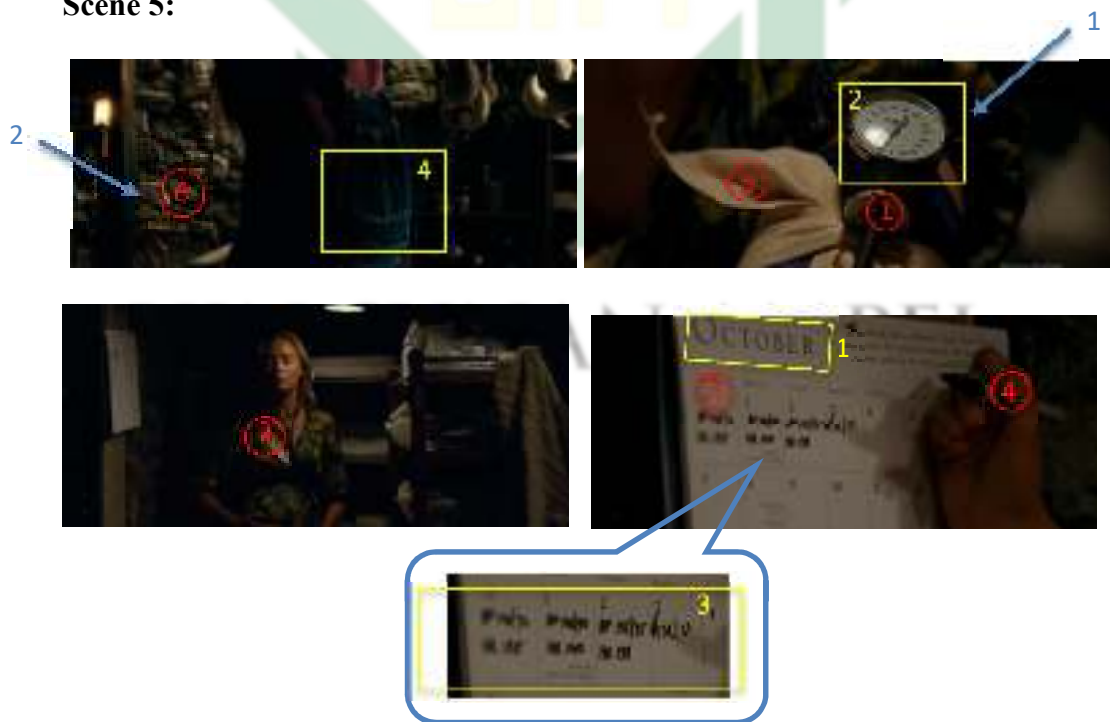


Sign	Data	Interpretation
Icon	(1) Television and CCTV equipment	Pairing with cctv device to monitor the condition of the house and its surroundings
	(2) Radio, Headphone, and Microphone	To communicate if there is radio frequency detected nearby
	(3) Whiteboard	Lee research
	(4) Piece of newspaper	Information about what happened outside and as a data source
	(5) Ear anatomy books	Guide for doing research
	(6) Solder and Magnifying glass	A tool for doing research
	(7) Hearing aids	Lee making hearing aids
Symbols	(1) CREATURE	Nickname that the father gave
	(2) BLIND	The result of the research the strange creature is blind
	(3) ATTACK SOUND	Strange creature can be countered with sound
	(4) ARMOUR	They need armor to self defense
	(5) SURVIVE	They should survive until the research done
	(6) MEDICAL SUPPORT	They need medical support to survive
	(7) WEAKNESS??	The father looking for the strange creature weakness
	(8) HOW MANY? CONFIRMED = 3	The number of strange creatures discovered so far is 3 species
	(9) THE HUMAN EAR	Lee does the research with reading 'The Human Ear' book as a guide
Index	(1) Working room	Lee doing research in the working room
	(2) Hearing aid creation	Lee made hearing aid by himself

Scene 4 describes if Lee doing research to find the weakness of the strange creature, write down all the research on whiteboard and read all the newspaper that consist information about the strange creature, collecting it and stick it on the

wall. It is known that strange creatures are very sensitive to sound, then Lee do research with looking for the information and reading an ear anatomy book to find out more about human hearing. All the guide books plus the existing information became the basis for why Lee made hearing aids as a tool. He uses CCTV equipment to monitors the movements of strange creatures through the television screen in the working room. He records and analyzes what they do, moreover to keep his family safe from attacks by strange creatures. So far, the number of strange creatures that are near their house after being monitored is 3 species. Lee named it ‘creature’ because this species is not human, alien, or animal, this is a special creature which is not known where it comes from.

Scene 5:



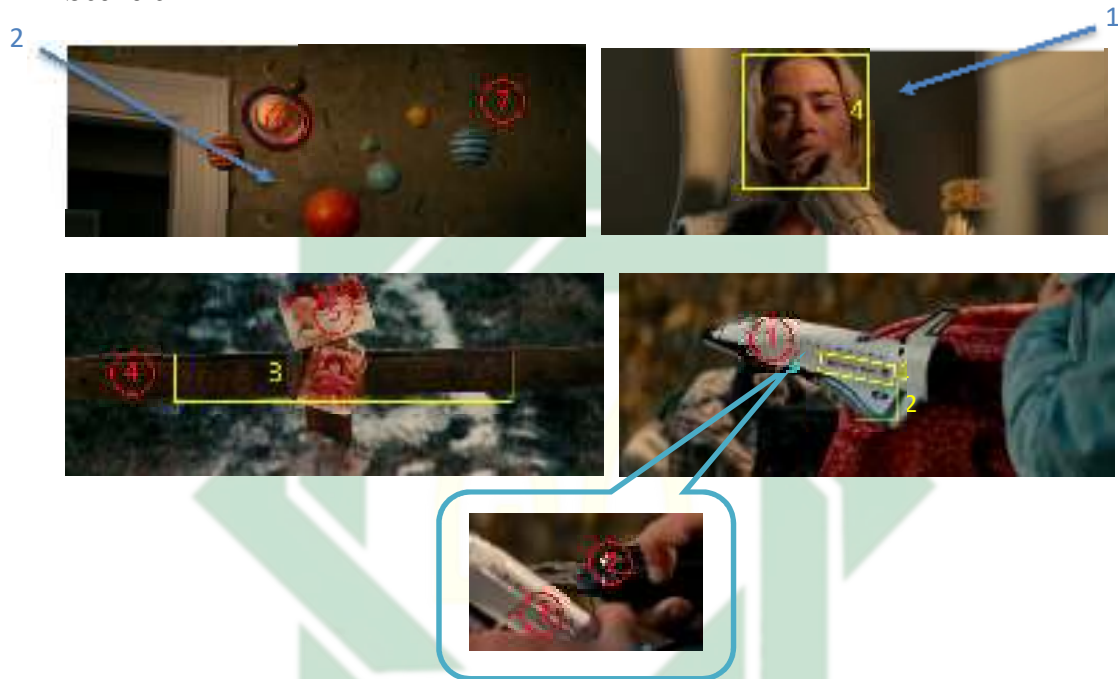
Sign	Data	Interpretation
Icon	(1) Tensimeter	Pressure gauge

	(2) Stethoscope	A tool for listening to the heartbeat
	(3) Calendar	Calculate the day of birth
	(4) Marker	To note on the calendar
	(5) Fabric	To suppress blood circulation
	(6) Rocks on the wall	They live in the basement
Symbols	(1) October	This incident happened in October
	(2) Number in the tensimeter	A sign for tension
	(3) 132/70 in the calendar	The results of the measurement of blood pressure from day to day
	(4) The woman bumpy body shape in the stomach	Evelyn is pregnant
Index	(1) Medical check up	To make sure everyone is in good health
	(2) Live in the basement	For safety

Scene 5 describes the whole family live in the basement for safety, because they can't carelessly walk outside the house because it is very dangerous and prone to encountering strange creatures. From the picture tells that Evelyn is pregnant judging by the bumpy body shape in the stomach and must maintain the health of her womb, therefore medical supplies are needed to maintain health. The mother routinely does medical checkups to measure blood pressure and record the results on a calendar every day so she can maintain her pregnancy. Due to a lack of medical supplies, Evelyn uses a tensimeter and uses a fabric to tie her hands when measuring blood pressure. She always regularly listens to her baby's heartbeat using a stethoscope to make sure that her baby is alive and in good health. Judging from the results of the blood pressure measurement, recently the mother's blood pressure has decreased, which means that Evelyn is under stress, this is very bad for the development of the fetus in the womb and can cause the

baby to be born prematurely (it's not the time to be born but already having to give birth)

Scene 6



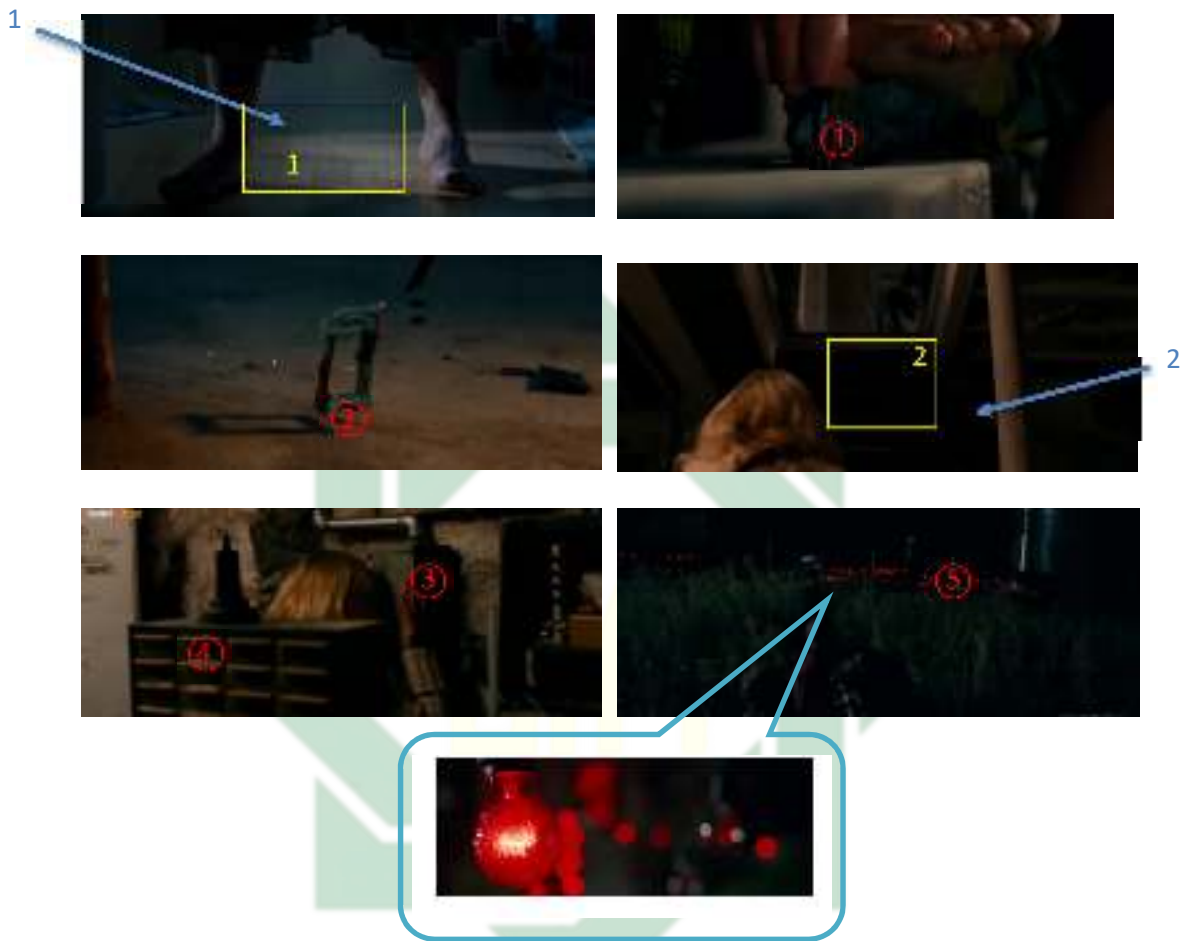
Sign	Data	Interpretation
Icon	(1) The rocket toy	The last toy that Beau had
	(2) Pliers	Cutting the rocket toy wire
	(3) Green wire	As an intermediary so that the rocket toy can make a sound
	(4) Grave wood	The last place Beau died
	(5) Boy picture	Beau childhood memories
	(6) The planets toy	There was once a child who had this toy
	(7) Dusty wallpaper with rockets and planets images	This wallpaper has been installed for a long time
Symbols	(1) United state and NASA	Replica of Nasa United State rocket toy
	(2) Bridge	Memorable place for Beau
	(3) 2016 & 2020	Date of born and date of died
	(4) The mother sad expression	Remembering Beau

Index	(1) Evelyn and Regan grieving	They are missing the old days
	(2) Kids room	There is a room filled with children's toys with planet wallpaper

Scene 6 describes Evelyn and Regan are remembering the death of the last child due a strange creature attack. The mother visits the room that reminds her of her child and cries on the sofa. Regan came to the bridge where this was the last place, she saw Beau. She even took the last toy her brother held before he died, which was a toy rocket. She accidentally cut the cable of the rocket toy using pliers because it was one of the causes of the death of Beau who accidentally turning on the toy. Their family made a sign using wood pieces and decorated it with photos of their childhood so they would never forget the presence of him. They both always felt guilty for accident, because he just 4 years old kid that don't understand the situation but walked in the last row, this makes no one was watching his movements.

UIN SUNAN AMPEL
S U R A B A Y A

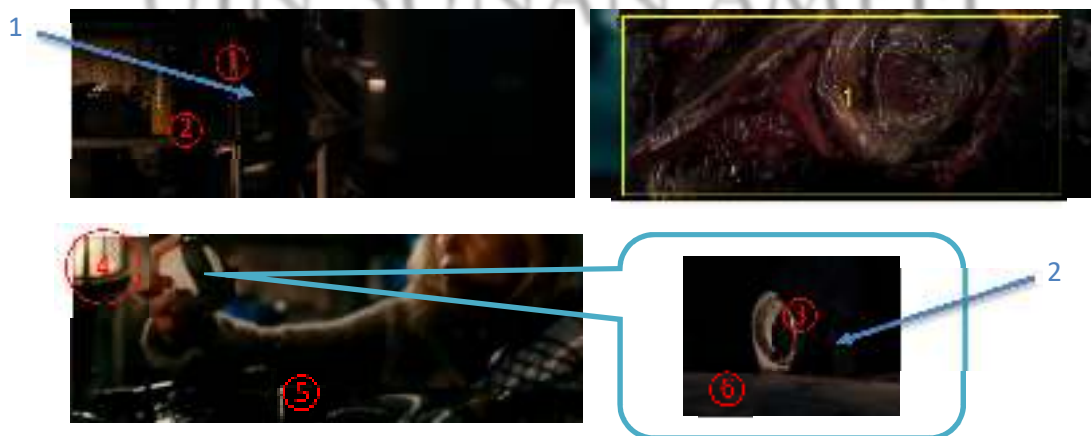
Scene 7:



Sign	Data	Interpretation
Icon	(1) Nail on the stairs	Accident source
	(2) Broken frame	Which makes strange creatures come
	(3) Light switch	Indication of certain events
	(4) Cabinet	Light switch is located near the workspace
	(5) Red light	Emergency
Symbols	(1) Water spilled on the floor	Amniotic fluid rupture
	(2) Strange creature walks into the house	Dangerous situation
Index	(1) Evelyn will give birth	Forced to give birth prematurely because of stress
	(2) Emergency situation	The house is surrounded by red lights

Scene 7 describes Evelyn felt depressed because of the current situation, suddenly had her waters rupture, which meant that she would give birth soon. She rushed down to the basement to prepare for childbirth. But there was an unexpected incident, there was a nail sticking out of the stairs when he was going down which stuck his foot in a nail. Evelyn gave a gesture to cover her mouth so as not to scream because screaming can make noise but without realizing it, she accidentally dropped a frame and made a very loud sound. This causes the strange creature to come to the source of the sound and enter the house. Immediately Evelyn turned on the light using the light switch in the working space, the light hanging outside the house turned red, she hoping someone had seen the red light and realized she was in a dangerous situation. This red light indicates that there is an emergency situation that occurs in the house. And in this situation known to happen at night.

Scene 8



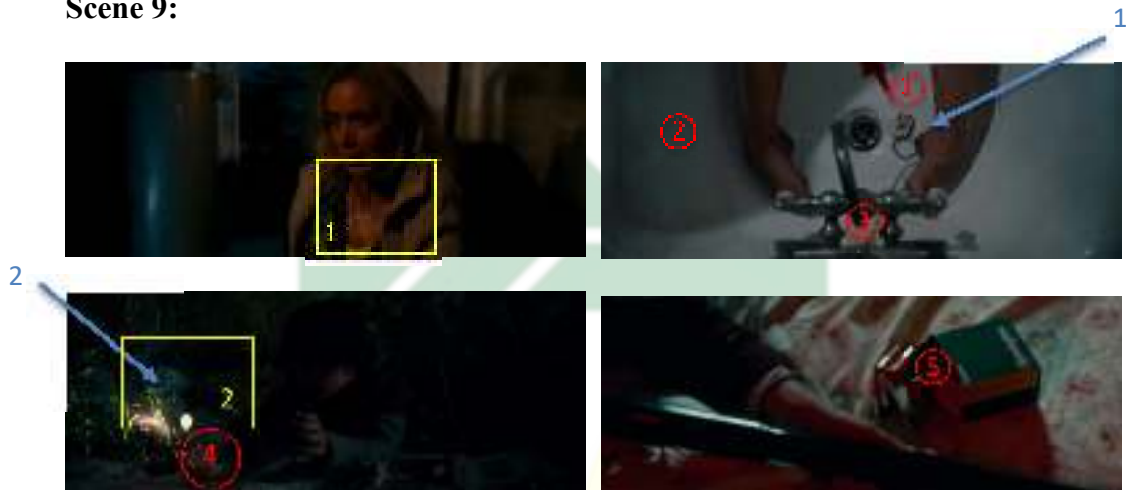
Sign	Data	Interpretation
Icon	(1) Shelf	Working room

	(2) Glue can	glue to make a soundproof room
	(3) Alarm clock	Set the trap with the sound of the alarm
	(4) Lantern	For lighting the basement
	(5) Survival equipment	Various kinds of tools for survival
	(6) Water pipe	To drain the water from above to the basement
Symbols	(1) The strange creature eye, teeth and ear	It is known that strange creatures are blind, have very sharp teeth like predators but have sharp ears and are sensitive to high frequency
Index	(1) The house get attack	Because there was a noise coming from inside the house, a strange creature came to the source of the sound
	(2) Trap	The mother set a trap for distracting the strange creature

Scene 8 describes after from the top of the house, a strange creature came to the basement because it heard a sound. From here Evelyn hides so as not to be ambushed by strange creatures. From this story it can be seen that the strange creature has a very abstract face shape, it has no eyes meaning it is blind, has very sharp teeth like a carnivorous predator, has layered ears and is very sensitive to sound, especially sounds with high frequency. A strange creature it can be interpreted as a very dangerous creature because it attacks anything that makes a sound. Because the strange creature has entered the basement, Evelyn hides while secretly taking alarm clock to set traps. She prepared a trap to distract the strange creature, she put the trap on top of the water pipe across the stairs. she set the alarm clock so that it would ring at the time he specified and placed it in a farther

place while he escaped out of the basement while waiting for the alarm clock to ring.

Scene 9:

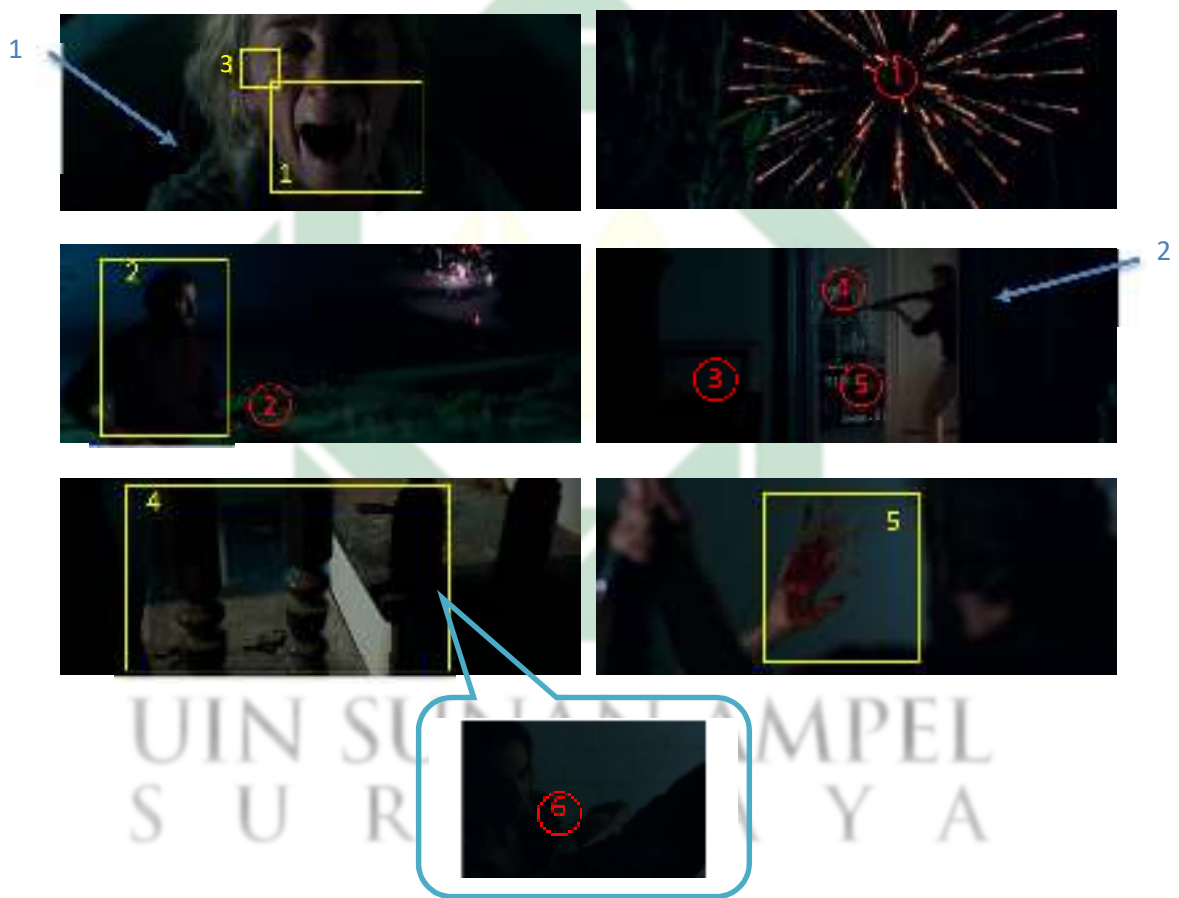


Sign	Data	Interpretation
Icon	(1) Evelyn blood	Pain
	(2) Clean bathtub	The bathtub is clean because it is deliberately cleaned
	(3) Rusty water faucet	The old water faucet is not used
	(4) Firecracker and fire lighter	A plan to distract the strange creature
	(5) Shotgun and the ammos	For self defense
Symbols	(1) Sweat all over the mother body	the effects of going into labor
	(2) Fire spark and smoke	Because fireworks
Index	(1) Evelyn gave birth preparation	Evelyn gave birth preparation in the bathtub because that was the only place that was sterilized
	(2) Set up decoy	Preparing firecracker because the noise of firework is so loud

Scene 9 describes Evelyn was running to save herself because she about to give birth, she was sweating due to fear and nervousness. She headed to the bathroom to give birth in a bathtub that had been prepared for labor and had been

sterilized. Evelyn bled quite a lot because she was going to give birth alone without anyone's help. Then, Marcus who is outside the house is getting ready to set off fireworks to distract the strange creature, and Lee is getting ready to take a shotgun and bullets for self-defense.

Scene 10:

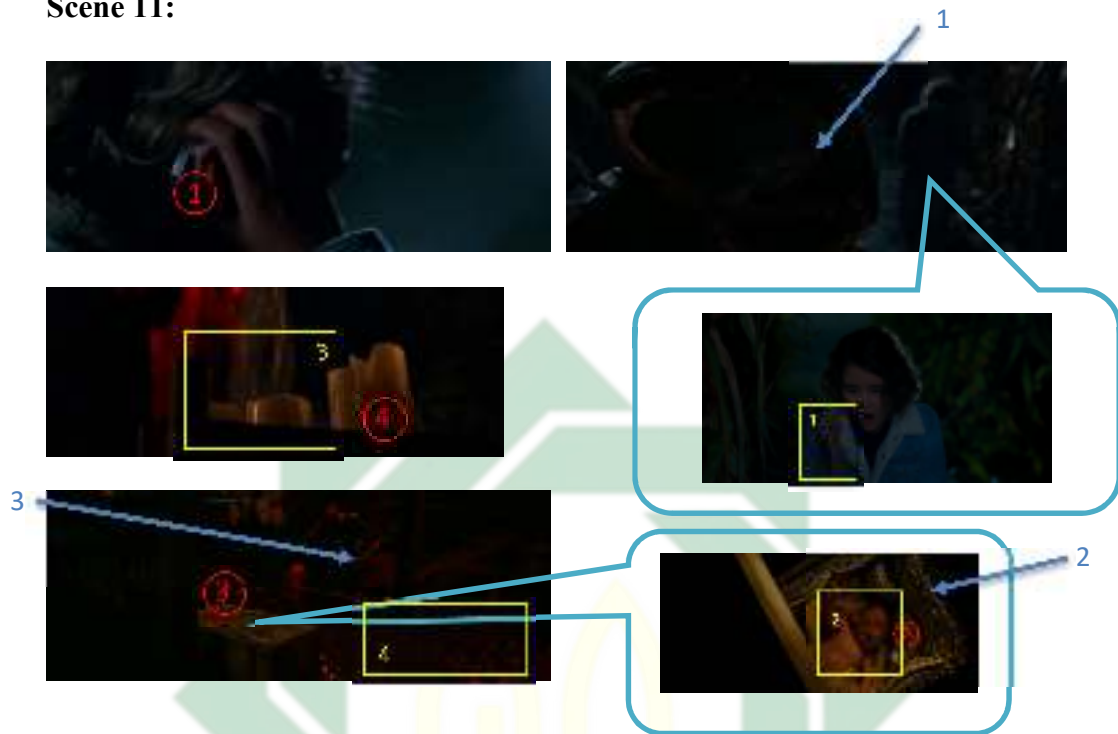


Sign	Data	Interpretation
Icon	(1) Firework	Decoy
	(2) Shotgun hold by the father	For defense
	(3) Piano	Items indicate the dining area
	(4) Chandelier	
	(5) Dining table	
	(6) Newborn baby	Successful birth process

Symbols	(1) Evelyn opening her mouth and scream gesture	Evelyn in pain during childbirth
	(2) Lee running	Saving his family
	(3) Evelyn tears	Tears of pain, fear, and happiness at the same time
	(4) Blood footprint	Evelyn footprints
	(5) Bloody handprints	The handprints meant that Evelyn was safe and was in the bathroom
Index	(1) Evelyn gives birth	Gave birth safely even in the midst of a very dangerous situation
	(2) Rescue mission	Rescue mission for the Evelyn who gave birth

Scene 10 describes Finally, Evelyn gave birth in tears and screaming loudly because she was in so much pain, then the fireworks that had been prepared were turning on to cover the sound of Evelyn screams during childbirth. In the middle of the situation, Lee ran with a weapon and entered the house to find and protect Evelyn. Lee entered the house through the dining hall and family room to the stairs while looking for his wife and found bloody footprints along the floor and stairs, he followed these tracks until he reached the bathroom, then found bloody handprints on the bathroom door. Turns out Evelyn survived and hide in the bathroom while holding their newborn child safe and sound.

Scene 11:

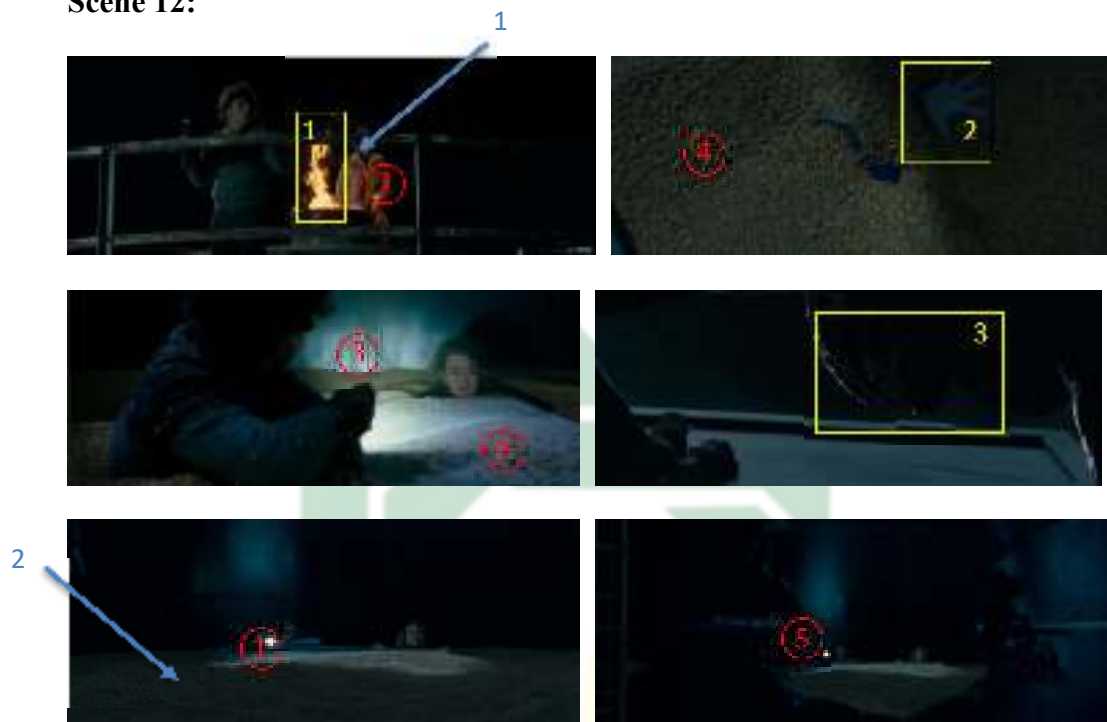


Sign	Data	Interpretation
Icon	(1) Hearing aids	Weapons against strange creatures
	(2) Respiratory	Respirator prepared for newborn baby
	(3) Wooden box	The box is made of wood using it because the goods are very limited
	(4) Melted candle	the candle dies due to the water flowing from above
Symbols	(1) Hand gesture beside the ear	Hearing aids suddenly made a very loud sound
	(2) Baby crying expression	Babies after birth always cry
	(3) Water flowing from above	There is a leak because the water pipe is leaking
	(4) Flooding water	The floods have been long enough to cause waterlogging
Index	(1) Strange creatures in pain	Weaknesses of strange creatures
	(2) Hide the baby in the wooden box	They hide the baby inside the box because it muffles sound and is safer

	(3) The basement flooded	The basement which was supposed to be safe was flooded which forced them to move to a safer place
--	--------------------------	---

Scene 11 describes Regan walked to meet Marcus. On the way there she was shocked by the high frequency produced by the hearing aid she was using. The sound was so loud that it hurt her ears. From the gesture, she was shocked because this sound came suddenly. Turns out that this sound proved to be a strange creature's weakness. Strange creatures were in pain when they heard the high-frequency sound made by this hearing aid. And this sound can only come out when there are strange creatures around. And in the house, Lee and Evelyn put the baby in a wooden box and gave him a respirator so that he could muffle the sound of the baby's crying which was very loud and also help the baby breathing. This was their best effort to hide the existence of the baby. While the baby was crying inside the basement, a very shocking incident happened. The basement is filled with water because there is a leak in the pipe. Water flowed from the top floor to the basement. All the candles went out and it made the atmosphere dark and tense. Basement flooded and made a lot of stuff stagnant on top of the water. Evelyn realized that there was a strange creature next to her baby looking for the source of the sound, she quickly secured the baby, taking him away from out of range of strange creature.

Scene 12:



Sign	Data	Interpretation
Icon	(1) Flashlight	To light up at night
	(2) Gasoline	To start a fire
	(3) Tank	The two children are above the tank to look around more widely
	(4) Dry corn	Plants that have been planted to survive
	(5) Hole in the tank	A hole made by a strange creature when it escapes from a tank
	(6) Tank door	The tank doors came off while they were on top of the tank
Symbols	(1) Fire and smoke	Make a bonfire
	(2) Hand buried in a pile of dry corn	They fell and drowned in a pile of dry corn
	(3) Strange creature in pain	Hearing the hearing aids frequency made strange creature in pain
Index	(1) To warm themselves and to give a sign of their presence	To signal that someone is above the tank

	(2) They fall and trap inside tank full of dry corn	Accidental accident
--	---	---------------------

Scene 12 describes Regan and Marcus started a fire to tell their location, they brought flashlights and gasoline to add to the light by making bonfire, in addition to telling their location, they also warmed their bodies in this fire. They deliberately chose to stand above the tank because this is where they could see around the house widely. But there was an incident, when they were walking around, they fell into a tank containing dry corn, because the tank was very deep, they almost drowned in the tank and were buried with dry corn. Then Marcus had the idea to use the fallen tank door as a handle so he wouldn't drown while waiting to be rescued. Not yet saved, a strange creature came because they made a very loud noise by screaming. The strange creature escapes again in agony at the sound of the hearing aid the older sister is wearing and escapes by making a big hole in the corn tank. This hole is what they use to get out of here.

UIN SUNAN AMPEL
S U R A B A Y A

Scene 13:



Sign	Data	Interpretation
Icon	(1) Truck	Regan and Marcus took cover in the truck
	(2) Axe	For weapon
	(3) Hearing aids	the tools Regan uses every day
	(4) Blood in the grey t-shirt	Lee's wife's blood during childbirth
Symbols	(1) Marcus shock expression	Marcus is surprised because a strange creature follows them to the truck
	(2) Lee opening mouth gesture	sacrifice for his family
	(3) Lee crossing hand sign	"I Love You" sign
Index	(1) Strange creature attack	The strange creature chased Regan and Marcus into the truck as they ran making a lot of noise

	(2) Lee sacrifice herself for his family	There is no other choice but to sacrifice himself because the lives of his entire family are threatened
--	--	---

Scene 13 describes After getting out of the tank and being chased by a strange creature, Regan and Marcus them ran and hide in his father's truck. They were surprised because another strange creature raced after them. They were very scared in the car which was being attacked by strange creatures, and again the Regan hearing aid emitted a sound frequency that was so loud that it hurt her ears, but this frequency sound was lost to the sound of iron and trucks because of the attack from the strange creature, like the one in the gesture in the picture. Lee who was aware of this incident, could only remain silent watching his two children being attacked by a strange creature. Finally, Lee made the decision to sacrifice himself. Before sacrificing himself, Lee gave a message using sign language which means "I love you" and sacrificed himself being attacked by a strange creature by screaming. As soon as his Lee screamed, Marcus released the handbrake of his truck and fled using the truck. Lee died being attacked by a strange creature.

Scene 14:



Sign	Data	Interpretation
Icon	(1) Hearing aids	Hearing aids are part of Lee's research
	(2) Microphone	To seek help around the forest
	(3) Shotgun	For self defense
	(4) Bloods in the floor	Strange creature died
Symbols	(1) Human audible frequencies	Lee studies human audible frequencies to find weaknesses in strange creatures
	(2) Ear anatomy book	Lee also studied the anatomy of the human ear
	(3) Regan tears	Regan cried because she only found out about the strange creature's weakness after his father died

	(4) Strange creature in pain gesture	The pain of hearing high frequency hearing aids
Index	(1) The weakness of strange creature	His weakness was discovered because of hearing aids

Scene 14 describes Regan was moved to tears when she learned about the weakness of strange creatures when her father died. Regan, who had been forbidden by his father to go down to the basement, was sad when he found that many hearing aids had been researched by his father all this time. It turns out that the weakness of strange creatures is the high frequency sound emitted by hearing aids. Since the whole house has been booted by strange creatures, the mother takes a shotgun for self-defense. Seeing all this, Regan had the idea that he would transmit the sound coming out of the hearing aids into the microphone next to him so that all strange creatures feel pain and can be killed. Regan and her mother were cornered, she immediately attached a hearing aid to the microphone and caused the strange creature to suffer pain. Evelyn immediately killed the strange creature by shooting it with a shotgun. Strange creature dies.

4.2 Discussions

Semiotics is a study of sign. There are two types of semiotics contemporary models from Ferdinand de Saussure and Charles Sanders Pierce. The first is semiotics theory by Ferdinand de Saussure called dyadic model, there are signifier and signified. And the second is semiotics theory by Charles Sanders Pierce called triadic theory, there are representamen, interpretant and object. Signs of all types are recognizable as such because they have certain predictable and

regular properties or structure (Sebeok, 1999, p. 6). In this research, the researcher using triadic model of semiotics by Charles Sanders Peirce. The benefit of studying semiotic analysis is to know more about the explicit meaning. For example, when we read someone's thoughts, but by studying semiotics we can find out someone's true intentions by looking at the expressions and gestures that person gives besides just what they say. Not only expressions and gestures, we can also find out the meaning behind something by looking at the objects around us because language is the same as a code, what we see and hear is not necessarily the real meaning, therefore we study semiotics to find out the meaning behind a situation.

The researcher presents the finding focuses on finding the hidden meaning of every sign in every scene that exist in *A Quiet Place* movie with analyze icon, symbol, and index. By analyzing the icons, symbols, and indexes in the *A Quiet Place* movie, we can see the meaning that exists in this movie which mostly use non-verbal for communication.

In this study, the first question has been answered by the researcher about what are the sign that represent icons, symbols, and indexes. This research tries to reveal the meaning by analyzing the icons, symbols, and indexes found in this movie. The researcher succeeds in finding hidden meaning in *A Quiet Place* movie by analyzing icons, symbols, and indexes using the parameter discovered by the researchers. Icon, index, and symbols help to identify the hidden meaning to be conveyed in the *A Quiet Place* movie. This is similar to what was conveyed by Charles Sanders Peirce (1931), That sign... addresses somebody, that is, creates

in the mind of that person an equivalent sign, or perhaps a more developed sign. Analysis about icons, symbols, and indexes can help the audience to find the true meaning of a movie.

Then, the researcher answered the second research question what is the meaning of icons, symbols, indexes that found in *A Quiet Place* movie. The researcher found that there are many meaning in this movie contain icon, symbol, and index that already found in the first research question because the sign that already found are related with the meaning in every scene. There are many events and disasters in this life, but we must survive to continue the next life. Lee Abbot did research to find out the weaknesses of this creature so that humans could live together as before. In the end, this research is very useful for the next generation of life. There are many ways to survive, so we shouldn't waste the life we have, we have to survive even though we can't communicate directly, we can still use gestures, hand signs, facial expressions, even the color of the lights can also be used to communicate. Another meaning contained in this movie is that there are no parents who didn't love their children, the proof is that the father is willing to sacrifice himself for his children. Lastly, this film teaches us to remain grateful.

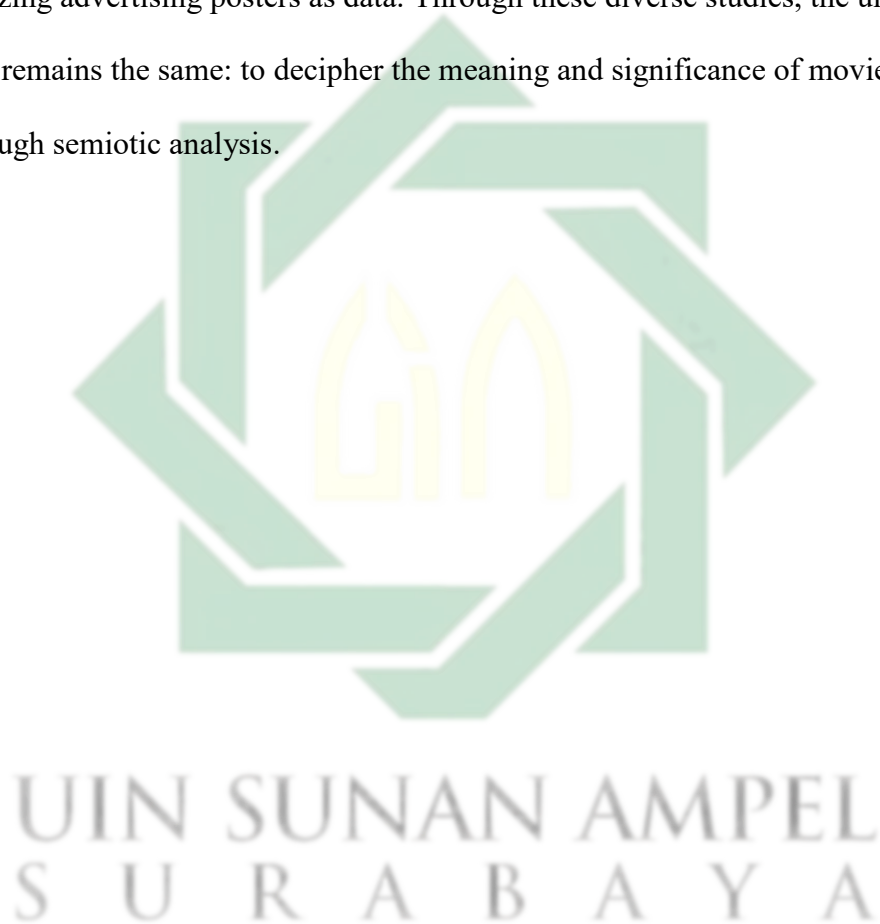
The application of Peirce's triadic theory in analyzing signs in the movie "*A Quiet Place*" offers several insights. Firstly, the theory allows for a comprehensive examination of the various sign types present in the film. The iconic signs, such as hearing aids assist the researcher in reveal the true function of the icon inside this movie. Indexical signs are evident through the way parents survive and treat their children, providing researcher with the understanding of

there are no parents who don't love their children, even though they live within limitations they can do anything to survive for the sake of their family.

Additionally, the symbolic signs, such as 'MISSING, PLEASE CALL', represent that humans cannot live alone far from their families, many people are separated from their families and some are still united. Teaching us to remain grateful for what we already had. By utilizing the triadic theory, one can unravel the intricate web of signs in "*A Quiet Place*" and gain a deeper understanding of their significance in building tension, conveying information, and enhancing the overall narrative.

In addition to verbal communication, non-verbal forms of expression play a significant role in conveying meaning. A notable example is Charlie Chaplin, a renowned British comedian, director, and film composer, who effectively communicated messages without the use of words. Through body gestures, facial expressions, and the surrounding objects, Chaplin conveyed a wide range of meanings. As Chaplin once stated, "My pain may be the reason for somebody's laugh. But my laugh must never be the reason for somebody's pain" (Chaplin, 1889). The analysis of the relationship between the representamen and the object in action films, such as the research conducted by Pauzan (2018) on the movie *John Wick 1*, or the examination of symbolism's influence on the main character in the movie *Kingdom of Heaven*, as studied by Nurkia (2018), demonstrate the significance of semiotics in understanding cinematic works. Dewi (2021) also explored the types of signs—representamen (qualisign), object (icon), and interpretant (rheme)—in her analysis of a film. Similarly, Rizky (2018) conducted

a semiotic analysis of the animated movie *Inside Out*. These studies collectively emphasize the use of semiotics to uncover the deeper meanings embedded within films. Another application of semiotics is seen in Amalia's (2022) analysis of Disney movie posters, employing Charles Sanders Peirce's framework and utilizing advertising posters as data. Through these diverse studies, the underlying aim remains the same: to decipher the meaning and significance of movies through semiotic analysis.



CHAPTER V

CONCLUSION AND SUGGESTION

In this chapter the researcher presents brief explanation about the finding and discussion for the next researchers who wants to choose a semiotic approach. Also, give suggestions for next research.

5.1 Conclusions

The researcher draws a conclusion after finding the data of captured scene, classifying the icons, symbols, and indexes of the movie, the researcher finds the meaning behind every scene of *A Quiet Place* movie using semiotic theory by Charles Sanders Peirce triadic model. It is known that there are many signs that can be found in the movie, starting from icons that can be found from objects, realistic paintings, artifacts, and lighting. Symbols can be found from alphabets, gestures, expressions, hand signs, and books. Indexes that can be found from the situations and storylines that exist in captured scene. All of these parameters play a very important role in finding icons, symbols, and indexes as well as finding hidden meanings in the *A Quiet Place* movie.

Many of the scenes in *A Quiet Place* movie where their origins are not explained, such as where the items are collected from to be able to find the weaknesses of strange creatures, their way of survival and time transfer are also not explained in detail and the storyline tends to be ambiguous. There are also many sign languages that the audience may not understand which can lead to misunderstanding of the original meaning that is to be conveyed in this film.

Therefore, an in-depth analysis is needed regarding the analysis of the film. Many things will be revealed if the storyline is learned and analyzed deeper.

5.2 Suggestions

Suggestions for future researchers in analyzing movies are to be able to provide a secondary theory regarding cinematography because this knowledge can analyze recording moving images of an action in front of a camera so that further research can reveal all the meanings contained in the film. Because of this, the existing parameters cannot help to analyze the whole movie, there are many signs that cannot be analyzed using semiotics analysis related to icons, symbols, and indexes because they cannot explain the whole picture of the scene just by looking at the signs. However, we can analyze all films by relating this research to the study of cinematography. That's why it is important and needs improvement in the storyline to find out more about the meaning of each scene in the *A Quiet Place* movie. If necessary, maybe next researcher can find a movie that has a narration so the next researchers can analyze the film and look for the meaning well. Finally, the researcher hopes that this research can be a good source and reference for future researchers.

REFERENCES

- Akamaliah, A. (2021). Representasi pesan moral dalam film the theory of everything (analisis semiotik charles sanders pierce), UIN Sunan Ampel Surabaya. Retrieved 14 June 2021, from http://digilib.uinsby.ac.id/46198/2/Adibah%20Akmaliah_B05217003.pdf
- Amalia, M. (2022) Semiotics analysis of disney movie posters, UIN Sunan Ampel Surabaya. Retrieved 10 January 2023, from <http://digilib.uinsa.ac.id/58131/>
- A Quiet Place (2018) - IMDb. (2021). Retrieved at 13 June 2021, from <https://www.imdb.com/title/tt6644200/>
- Asyraq Pauzan, A. (2018). A semiotic analysis of the john wick 1 film using charles sanders peirce's semiotic theory. UIN Alauddin Makassar. Retrieved from <http://repositori.uin-alauddin.ac.id/7324/1/ALFAN%20ASYRAQ%20PAUZAN-compressed.pdf>
- Atkin, A. (2010). Peirce's theory of signs. Retrieved 1 July 2021, from <https://plato.stanford.edu/entries/peirce-semiotics/>
- Ayu Rizky, D. (2018). Studi analisa semiotika dalam film animasi "inside out", Universitas Muhammadiyah Surakarta. Retrieved from <http://eprints.ums.ac.id/63385/1/NASKAH%20PUBLIKASI.pdf>
- Chandler, D. (2018). Semiotics. New York, NY: Routledge.
- Marchand, M. (2021). Charles sanders peirce: semiotics / signo - applied semiotics theories. Retrieved 10 June 2021, from <http://www.signosemio.com/peirce/semiotics.asp>
- Putra Nurkia, G. (2018). The analysis of symbols in kingdom of heaven film by ridlet scott. Jambi, State Islamic University Suthan Thaha Saifuddin. Retrieved from <http://repository.uinjambi.ac.id/790/1/M.%20Gufran%20Putra%20Nurkia%20%28AI.140242%29%20-BK%20-%20gufran%202901.pdf>
- Sebeok, T. (1999). Signs. Toronto: University of Toronto Press.
- Sendera, H., & Totu, A. (2014). The semiotic perspectives of peirce and saussure: a brief comparative study, 155 (2014) 4 – 8.
- Sihite, J., Muchtar, M., & Rangkuti, R. (2021). A visual semiotic analysis on the spongebob movie. Journal of linguistics and literary research, Vol. 2, No. 1,

2021. Retrieved from
<https://talenta.usu.ac.id/lingpoet/article/download/5007/3597/18726>

Straub, J. (2022) What is Cinematography? Definition & examples. Retrieved 14 June 2023 from <https://boords.com/blog/what-is-cinematography-definition-and-examples>

Wardhaugh, R (1972). Introduction to linguistics. New York.



UIN SUNAN AMPEL
S U R A B A Y A